

www.covidstates.org

THE COVID STATES PROJECT: A 50-STATE COVID-19 SURVEY REPORT #83: EXECUTIVE APPROVAL

USA, April 2022

Alexi Quintana, Northeastern University
David Lazer, Northeastern University
Matthew A. Baum, Harvard University
James Druckman, Northwestern University
Roy H. Perlis, Harvard Medical School
Katherine Ognyanova, Rutgers University
Mauricio Santillana, Harvard Medical School
Alauna C. Safarpour, Harvard University

Tamanna Urmi, Northeastern University
Kristin Lunz Trujillo, Northeastern University
Hong Qu, Northeastern University
Ata Uslu, Northeastern University
Jon Green, Northeastern University
Caroline Pippert, Northwestern University
Anjuli Shere, Harvard University



Northeastern University
Network Science Institute



HARVARD Kennedy School
SHORENSTEIN CENTER
on Media, Politics and Public Policy



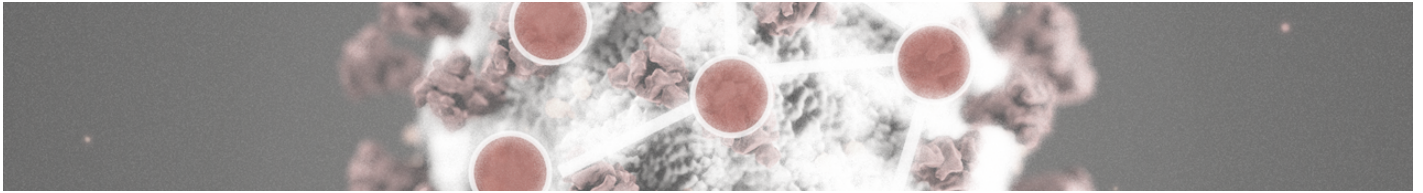
HARVARD
MEDICAL SCHOOL



RUTGERS
THE STATE UNIVERSITY
OF NEW JERSEY



Northwestern
University



Report of April 12, 2022, v.1

The COVID States Project

From: The COVID-19 Consortium for Understanding the Public's Policy Preferences Across States

A joint project of:

Northeastern University, Harvard University, Rutgers University, and Northwestern University

Authors: Alexi Quintana (Northeastern University); David Lazer (Northeastern University); Matthew A. Baum (Harvard University); James Druckman (Northwestern University); Roy H. Perlis (Harvard Medical School); Katherine Ognyanova (Rutgers University); Mauricio Santillana (Harvard Medical School); Alauna C. Safarpour (Harvard University); Tamanna Urmi (Northeastern University); Kristin Lunz Trujillo (Northeastern University); Hong Qu (Northeastern University); Ata Uslu (Northeastern University); Jon Green (Northeastern University); Caroline Pippert (Northwestern University), and Anjuli Shere (Harvard University)

This report is based on work supported by the National Science Foundation under grants SES-2029292 and SES-2029297. Any opinions, findings, and conclusions or recommendations expressed here are those of the authors and do not necessarily reflect the views of the National Science Foundation.

This research was partly supported by a grant from the *Knight Foundation*.

We also received generous support from the *Russell Sage Foundation*.

The project was also supported by the *Peter G. Peterson Foundation*.

Data collection was supported in part by *Amazon*.

Our work was made possible through the continued financial and logistic support provided by *Northeastern University, Harvard University, Rutgers University, and Northwestern University*.



Northeastern University
Network Science Institute



COVER MEMO

Summary Memo — April 12, 2022

The COVID States Project

From: *The COVID-19 Consortium for Understanding the Public's Policy Preferences Across States*

Partners: Northeastern University, Harvard University/Harvard Medical School, Rutgers University, and Northwestern University

Authors: Alexi Quintana (Northeastern University); David Lazer (Northeastern University); Matthew A. Baum (Harvard University); James Druckman (Northwestern University); Roy H. Perlis (Harvard Medical School); Katherine Ognyanova (Rutgers University); Mauricio Santillana (Harvard Medical School); Alauna C. Safarpour (Harvard University); Tamanna Urmi (Northeastern University); Kristin Lunz Trujillo (Northeastern University); Hong Qu (Northeastern University); Ata Uslu (Northeastern University); Jon Green (Northeastern University); Caroline Pippert (Northwestern University), and Anjuli Shere (Harvard University)

Note on methods:

Between March 2, 2022, and April 4, 2022, we surveyed 22,234 individuals across all 50 states plus the District of Columbia. The survey was conducted by PureSpectrum via an online, nonprobability sample, with state-level representative quotas for race/ethnicity, age, and gender (for methodological details on the other waves, see covidstates.org). In addition to balancing on these dimensions, we reweighted our data using demographic characteristics to match the U.S. population with respect to race/ethnicity, age, gender, education, and living in urban, suburban, or rural areas. This was the latest in a series of surveys we have been conducting since April 2020, examining attitudes and behaviors regarding COVID-19 in the United States.

Contact information:

For additional information and press requests contact:

- David Lazer at d.lazer@neu.edu
- Matthew A. Baum at matthew_baum@hks.harvard.edu
- James Druckman at druckman@northwestern.edu
- Roy H. Perlis at rperlis@mgh.harvard.edu
- Katherine Ognyanova at katya.ognyanova@rutgers.edu
- Mauricio Santillana at msantill@fas.harvard.edu

Or visit us at www.covidstates.org.

Executive Approval in the United States

KEY FINDINGS

The Covid States Project has been tracking trends in executive approval of management of the COVID-19 outbreak throughout the pandemic. We find:

- Generally, there has been a downward trend for approval of all governors since the beginning of the pandemic.
- Republican respondents in particular have trended downwards in their approval of governors. Republican approval of Democratic governors has dropped from a high of 57% in April 2020, to 19% in April, 2022. Approval of Republicans for Republican governors has fallen almost as quickly, from a high of 77% in April 2020, to 44% currently.
- In the early stages of the pandemic, President Trump had notably low approval for his handling of the pandemic, far below the average approval levels of governors. President Biden has generally had approval levels above those of President Trump, peaking in the spring of 2021, and declining steadily since. This decline has been somewhat faster than the decline in approval of governors, reaching a nadir in April 2022 one point below that of the average governor at 38%.

Unhappiness with the management of the pandemic is remarkably universal and is taking its toll on the approval of the US President and of every state's governor. There is not a single state where either the President or the governor has an approval rating of 60% or higher. The average approval of governors' handling of COVID is notably low, at 39% (up one point from its low this past December/January). Approval of President Biden's handling of COVID is at its all-time low, one point below average governor approval at 38% (though the all-time low for the President during the pandemic was for President Trump at 32%). Both governors and the President have been in a year-long steady decline since spring 2021, with a slightly faster decline for President Biden than for the average governor. The fall from grace for governors at the beginning of the pandemic is particularly striking, where 38 governors had approval ratings higher than 60% (at which time President Trump was above 60% in a single state, Wyoming). President Biden's approval is notably lukewarm even in the most Democratic of states, with his apex of approval in Massachusetts and New Jersey, at 46%. A comparison in the trends of approval of the President compared to governors highlights that the approval of President Trump was at or near the bottom of the distribution of governor approvals; and President Biden has been near the middle of that distribution through his time in office.

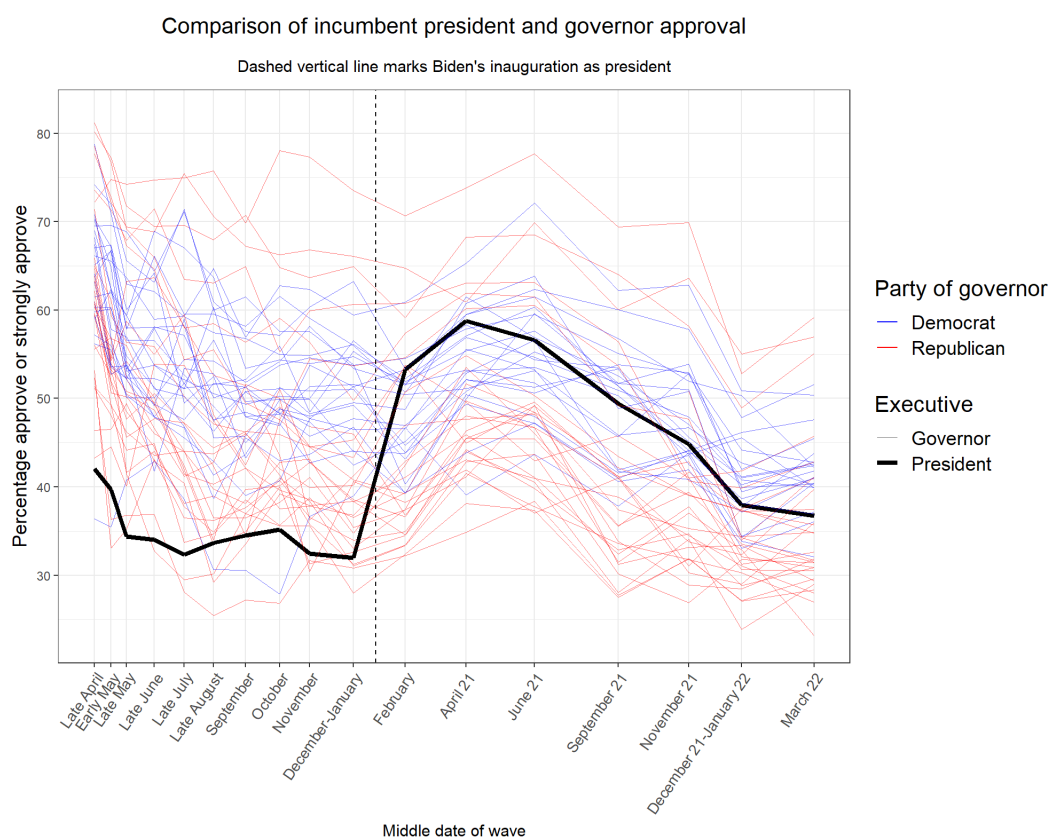


Figure 1: Trend in approval of President versus governors
 (the bold line is for the President, each non-bold line represents a particular governor)

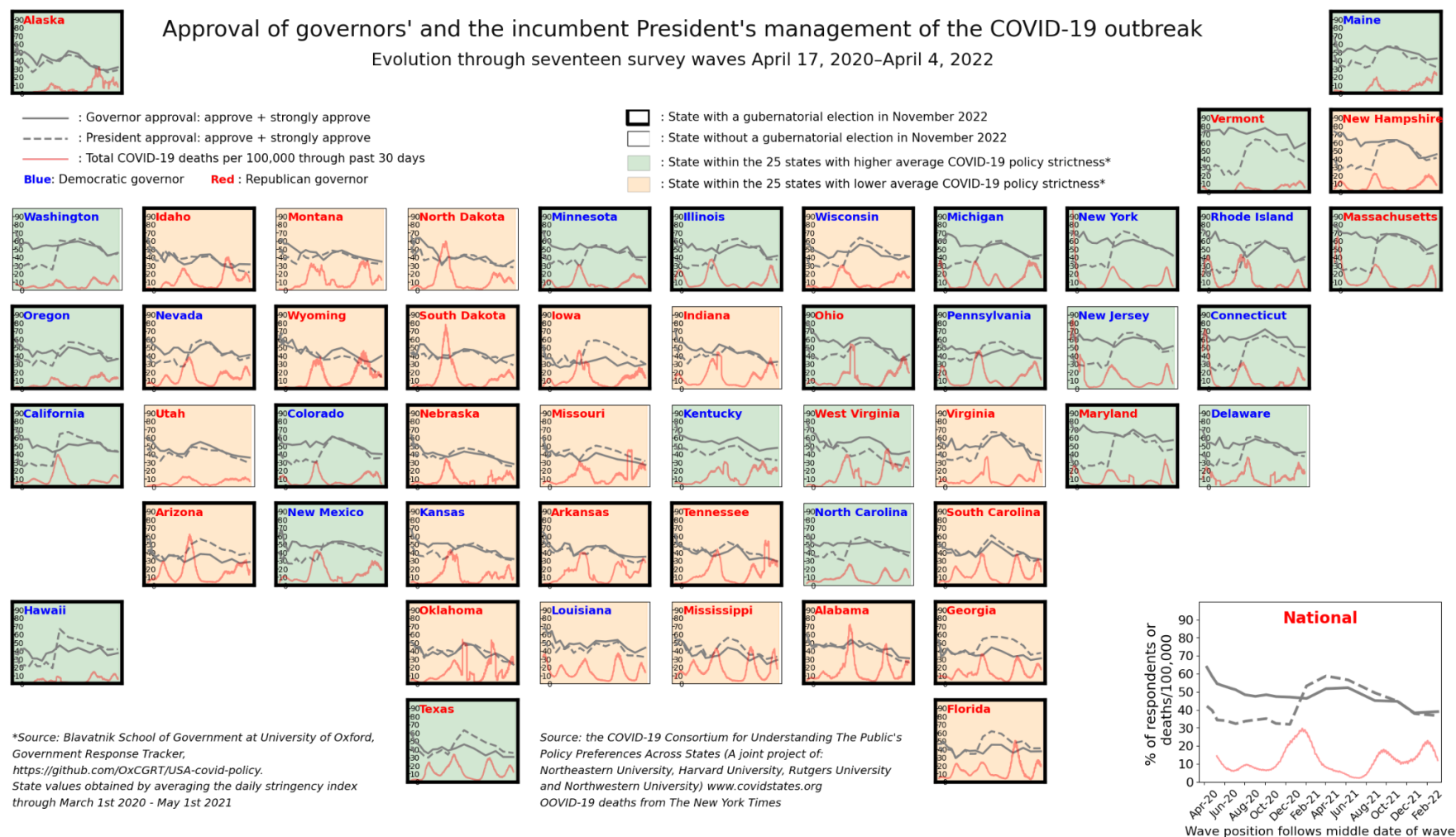


Figure 2: Trends for approval of the President and governors April 17, 2020 to April 4th, 2022.

[\(Download high-resolution image\)](#)

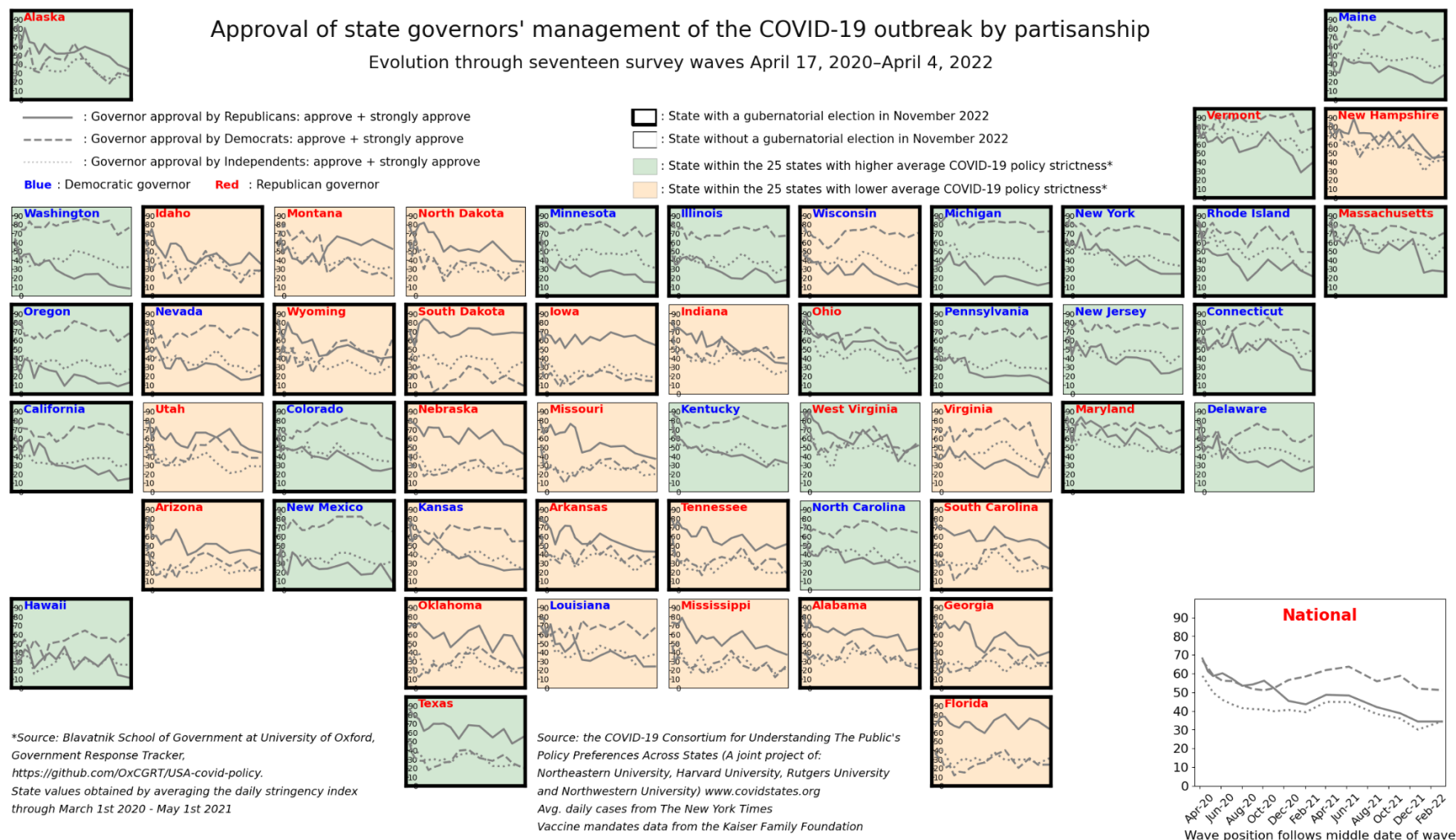


Figure 3: Partisan trends in approval of governors
([Download high-resolution image](#))

Generally, Republicans approve of their governors– whether they are Republican or Democratic– dramatically less than they did at the beginning of the pandemic. Approval of Republicans for governors is now at an all time low, at 44% for Republican governors, and only 19% for Democratic governors. A notable exception is Florida Governor DeSantis, whose approval among Republicans has remained fairly steady through the pandemic, and remains the highest of any governor, at 64% (approval of DeSantis among Democrats and Independents is quite low, however, at 24% and 31%, respectively).

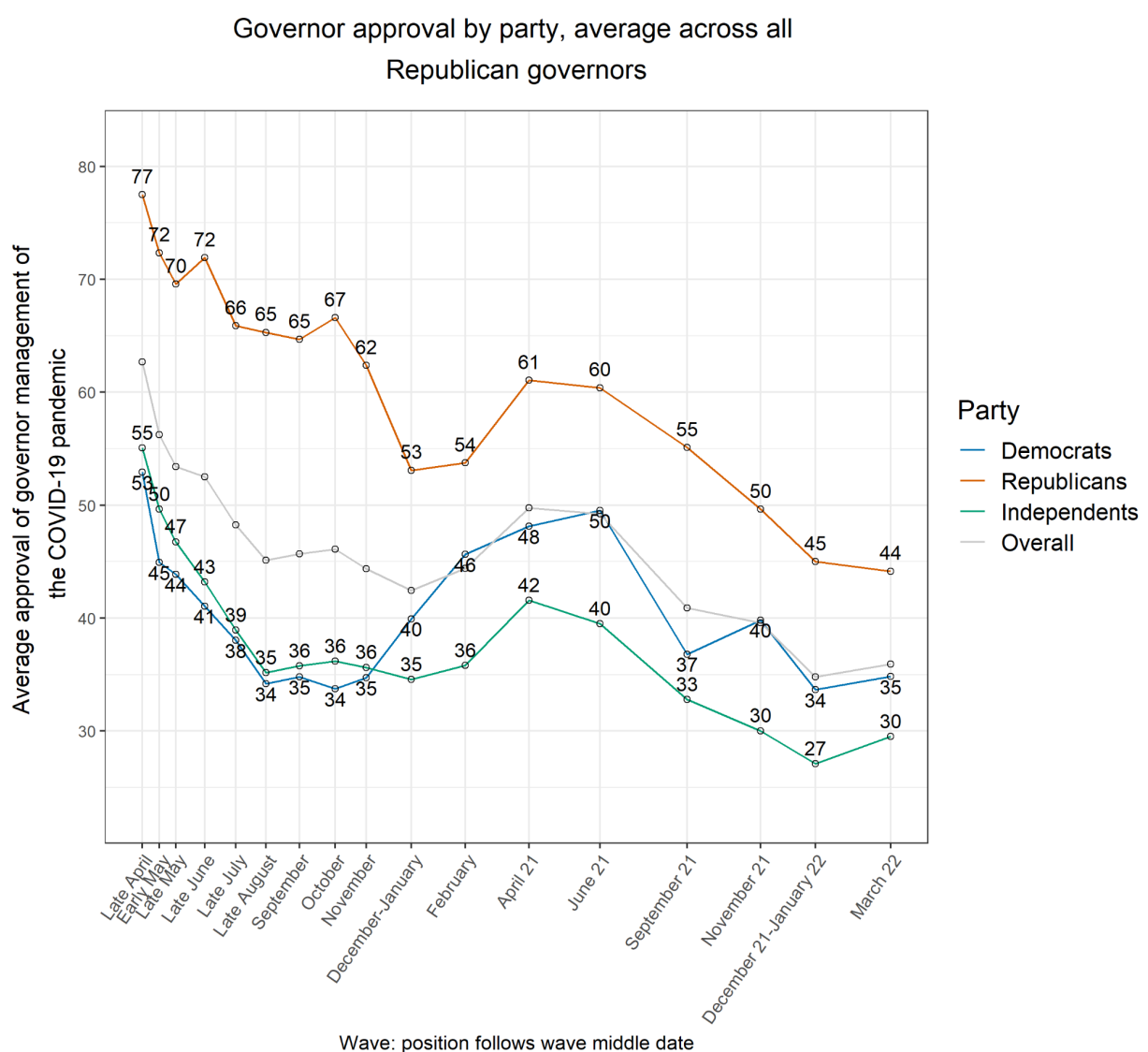


Figure 4: Average approval of Republican governors by party

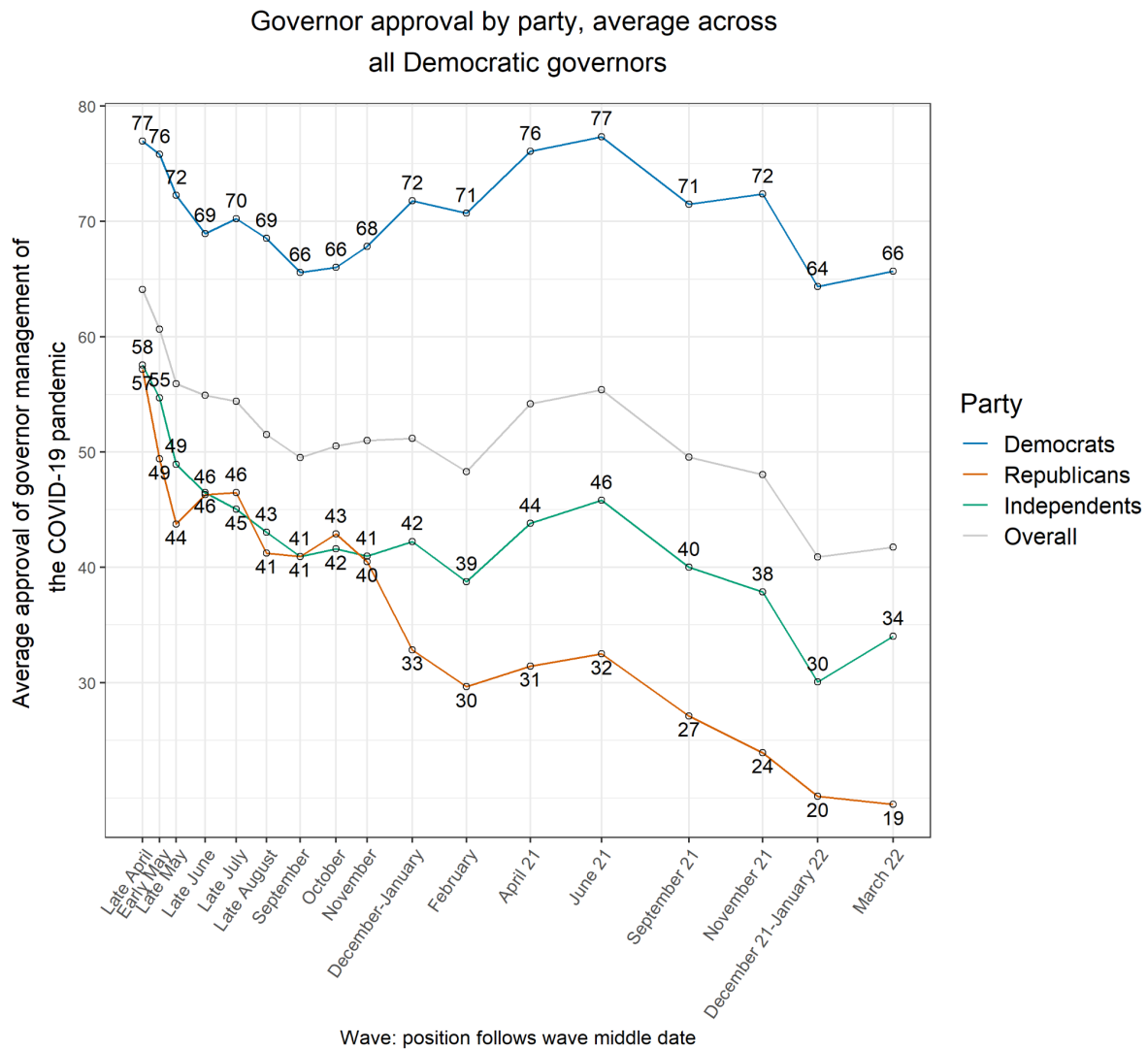


Figure 5: Average approval of Democratic governors by party

Democratic voters' approval of Democratic governors exhibited a drop in the spring of 2020, substantially rebounding in the winter of 2020/21, reaching an apex in June, 2021; and gradually declining since. The net result is that opinions of Democratic governors are sharply polarized, with the gap between Democratic and Republican approval at 47%; while opinions of Republican governors are far less polarized, with Republicans approving of Republican governors only 14 percentage points more than Democrats do. This asymmetric pattern has contributed to the relatively higher approval levels of Democratic governors than Republican; although there are a handful of Republican governors who have had robustly among the highest levels of approval throughout the crisis, as is evident in figure 2. This has been largely because of high levels of approval of Democrats, as we discuss next.

Across our reports on executive approval, we have tracked 5 Republican governors who have often been more popular with Democrats than Republicans, the governors of Massachusetts, Maryland, New Hampshire, Ohio, and Vermont. This pattern is now more extreme, because approval among Republicans of these 5 governors has cratered since the Fall, dropping from 61% to 41% currently, versus a much more modest drop among Democrats of 69% to 65%. Notably, the governor of Massachusetts (Charlie Baker) decided not to run for re-election (perhaps because of the likelihood he would lose in the Republican primary); the governor of Maryland (Larry Hogan) is term-limited; and the governor of Vermont (Phil Scott) has not declared whether he is running for re-election.

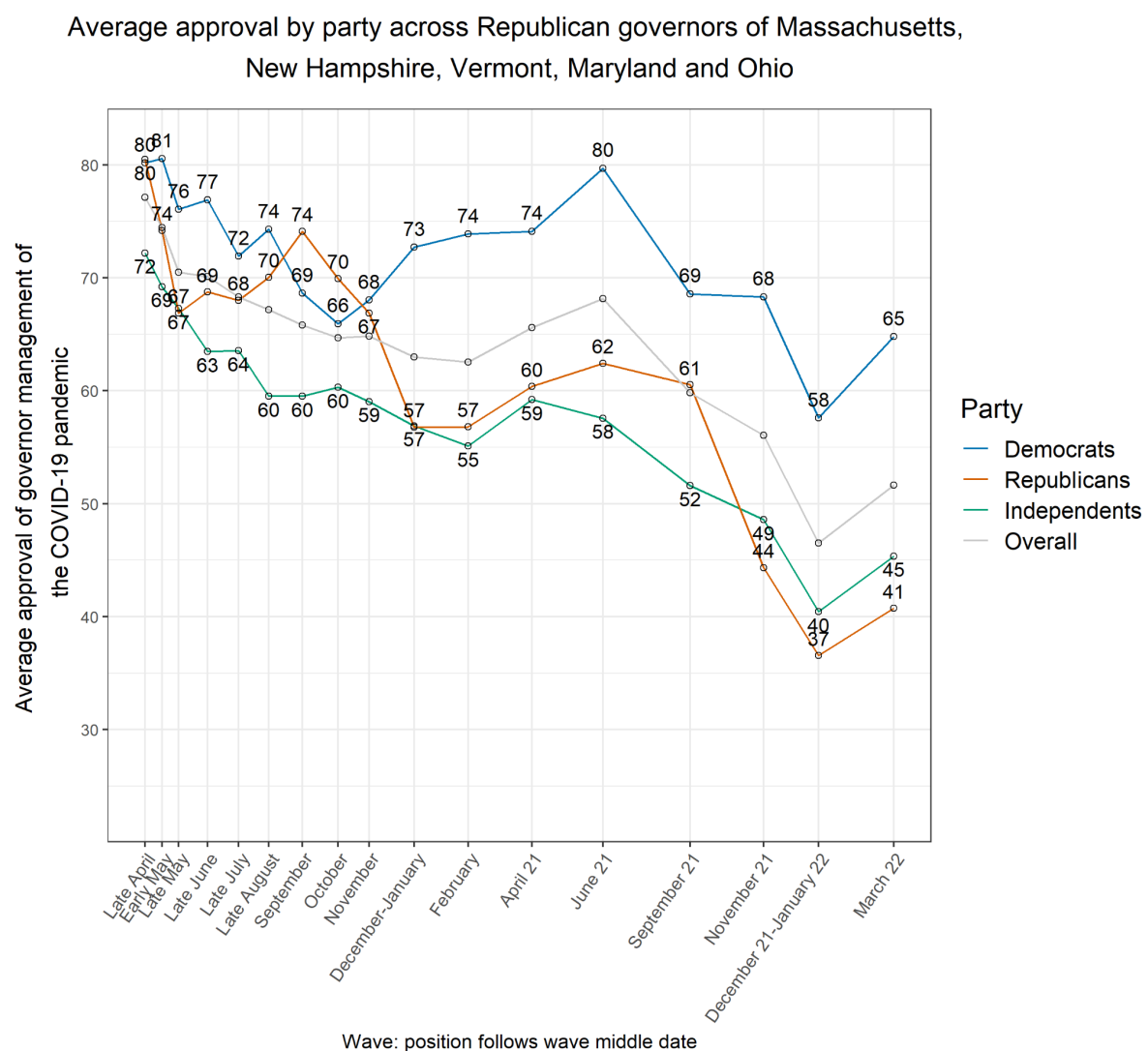


Figure 6: Average approval of governors of Massachusetts, New Hampshire, Vermont, Maryland, and Ohio by party

Average approval by party across Republican governors except Republican governors of Massachusetts, New Hampshire, Vermont, Maryland and Ohio

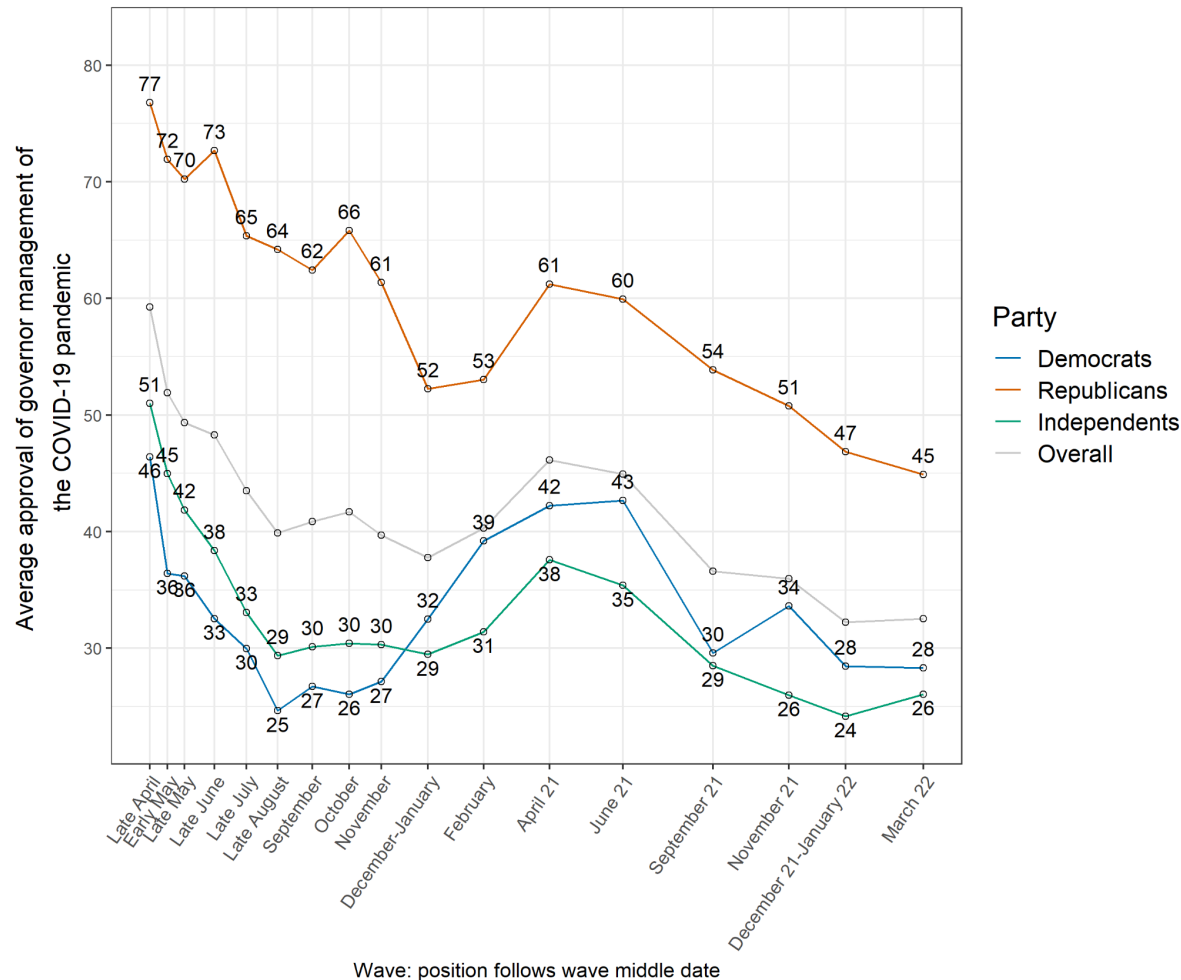


Figure 7: Average approval of Republican governors, except those of Massachusetts, New Hampshire, Vermont, Maryland, and Ohio by party

Appendix: State Tables

Table 1. Presidential approval (margin of error in parentheses)

State	Late Apr. 21	Early May 21	Late May 21	Late Jun. 21	Late Jul. 21	Late Aug. 21	Sep. 21	Oct. 21	Nov. 21	Dec- Jan. 21	Feb.	Apr. 21	Jun. 21	Sep. 21	Nov. .21	Dec. - Jan. 22	Mar. 22
Nat	42 (1)	40 (1)	34 (1)	34 (1)	32 (1)	34 (1)	34 (1)	35 (1)	32 (1)	32 (1)	53 (1)	59 (1)	57 (1)	49 (1)	45 (1)	38 (1)	37 (1)
AK	55 (14)	41 (10)	35 (13)	37 (10)	32 (10)	26 (12)	30 (10)	36 (7)	41 (8)	37 (6)	42 (7)	47 (9)	45 (9)	35 (9)	32 (9)	26 (7)	28 (8)
AL	54 (6)	52 (6)	42 (7)	45 (6)	46 (6)	46 (5)	50 (6)	48 (6)	46 (6)	43 (6)	49 (6)	52 (6)	43 (6)	39 (6)	34 (6)	28 (5)	26 (5)
AR	55 (6)	51 (7)	46 (7)	40 (7)	39 (7)	44 (6)	44 (8)	45 (6)	36 (7)	39 (6)	38 (5)	49 (7)	45 (7)	37 (6)	30 (7)	27 (6)	32 (6)
AZ	42 (6)	43 (7)	34 (5)	35 (5)	38 (7)	31 (5)	36 (6)	37 (6)	32 (5)	37 (5)	50 (6)	56 (7)	52 (6)	44 (6)	42 (5)	37 (5)	39 (5)
CA	32 (5)	34 (4)	27 (4)	25 (4)	30 (5)	28 (4)	25 (3)	27 (4)	26 (4)	26 (4)	64 (5)	67 (4)	61 (4)	57 (4)	54 (3)	45 (4)	44 (4)
CO	42 (6)	37 (6)	34 (6)	31 (5)	27 (6)	33 (5)	30 (6)	34 (5)	31 (5)	30 (5)	48 (6)	61 (5)	58 (6)	50 (6)	46 (5)	34 (5)	35 (5)
CT	34 (6)	32 (6)	31 (8)	26 (5)	22 (5)	30 (5)	23 (5)	28 (5)	21 (5)	26 (4)	56 (6)	61 (6)	64 (5)	56 (6)	50 (6)	44 (6)	39 (5)
DE	37 (7)	38 (6)	30 (7)	28 (6)	24 (7)	33 (8)	29 (7)	28 (6)	26 (6)	30 (5)	60 (7)	62 (7)	58 (7)	49 (6)	48 (7)	40 (6)	37 (6)
FL	42 (5)	42 (4)	38 (5)	40 (4)	39 (5)	29 (4)	34 (4)	39 (4)	34 (4)	34 (4)	55 (5)	62 (4)	59 (5)	47 (4)	50 (4)	41 (4)	41 (5)
GA	46 (5)	42 (5)	35 (6)	42 (5)	38 (6)	35 (5)	39 (5)	39 (5)	36 (5)	38 (5)	54 (6)	57 (6)	57 (6)	54 (5)	46 (5)	35 (5)	37 (5)
HI	31 (7)	30 (8)	20 (6)	23 (5)	20 (6)	27 (8)	21 (7)	21 (5)	26 (6)	19 (4)	67 (7)	57 (6)	54 (7)	49 (6)	46 (7)	42 (6)	42 (6)
IA	43 (6)	39 (6)	34 (7)	29 (6)	29 (6)	34 (7)	40 (8)	31 (5)	35 (5)	30 (5)	58 (6)	59 (6)	56 (6)	49 (6)	40 (6)	37 (6)	30 (5)
ID	51 (7)	46 (6)	42 (6)	36 (6)	36 (6)	49 (8)	42 (7)	45 (7)	38 (6)	39 (5)	41 (5)	40 (6)	42 (7)	31 (5)	32 (6)	24 (5)	22 (5)
IL	37 (5)	36 (5)	34 (4)	28 (4)	26 (5)	30 (4)	30 (4)	29 (4)	33 (5)	26 (4)	57 (6)	61 (5)	63 (5)	54 (5)	50 (4)	38 (4)	37 (4)

IN	50 (6)	49 (6)	39 (6)	37 (6)	30 (6)	38 (5)	39 (6)	43 (5)	39 (5)	41 (5)	41 (6)	52 (6)	44 (6)	44 (6)	38 (6)	31 (5)	29 (4)
KS	48 (6)	44 (6)	38 (8)	36 (6)	35 (6)	39 (6)	42 (7)	38 (6)	31 (5)	35 (5)	48 (6)	48 (6)	51 (6)	43 (6)	38 (7)	33 (6)	30 (6)
KY	52 (5)	47 (6)	44 (7)	47 (6)	45 (6)	42 (5)	46 (7)	42 (5)	39 (5)	40 (5)	45 (6)	49 (6)	51 (6)	38 (5)	32 (5)	34 (5)	32 (5)
LA	50 (6)	50 (7)	45 (7)	49 (7)	38 (7)	44 (6)	42 (8)	45 (6)	37 (6)	44 (5)	37 (7)	50 (7)	46 (6)	51 (7)	34 (7)	34 (6)	33 (6)
MA	35 (5)	34 (5)	27 (5)	24 (5)	26 (5)	24 (4)	27 (5)	26 (5)	24 (4)	21 (4)	67 (5)	69 (5)	66 (6)	61 (5)	54 (5)	44 (5)	46 (5)
MD	38 (6)	27 (5)	24 (5)	30 (5)	22 (5)	26 (4)	26 (5)	27 (4)	30 (5)	25 (4)	63 (6)	63 (6)	66 (5)	55 (6)	56 (5)	44 (5)	46 (5)
ME	46 (6)	37 (6)	34 (6)	33 (6)	31 (6)	40 (7)	38 (7)	36 (5)	31 (4)	34 (5)	52 (5)	57 (5)	57 (5)	42 (6)	43 (6)	37 (5)	32 (5)
MI	37 (5)	34 (5)	29 (5)	26 (5)	30 (6)	32 (5)	33 (6)	36 (5)	34 (4)	34 (5)	52 (5)	59 (5)	60 (6)	52 (5)	45 (5)	39 (4)	39 (4)
MN	44 (5)	39 (6)	33 (6)	33 (5)	36 (6)	35 (5)	30 (7)	34 (5)	38 (5)	28 (4)	49 (5)	55 (6)	55 (5)	45 (6)	48 (6)	38 (5)	36 (5)
MO	50 (5)	47 (5)	36 (5)	42 (5)	39 (6)	43 (5)	44 (6)	46 (5)	38 (5)	34 (5)	45 (6)	50 (6)	48 (5)	44 (5)	38 (5)	35 (5)	32 (4)
MS	46 (7)	50 (7)	48 (9)	48 (7)	37 (7)	45 (7)	45 (8)	47 (6)	35 (6)	34 (6)	47 (6)	56 (6)	52 (7)	35 (6)	36 (7)	30 (6)	33 (6)
MT	49 (8)	49 (8)	38 (11)	40 (7)	35 (7)	32 (8)	45 (8)	40 (6)	38 (6)	42 (5)	43 (6)	48 (7)	46 (7)	40 (7)	38 (7)	33 (6)	32 (6)
NC	48 (5)	46 (5)	40 (5)	35 (5)	35 (6)	34 (5)	40 (5)	41 (4)	33 (4)	30 (4)	54 (5)	59 (5)	54 (5)	53 (5)	45 (5)	41 (5)	36 (5)
ND	53 (11)	42 (8)	45 (9)	52 (9)	36 (8)	38 (9)	40 (9)	37 (6)	33 (6)	38 (5)	39 (6)	43 (6)	42 (7)	35 (6)	32 (7)	30 (6)	28 (6)
NE	54 (7)	49 (8)	38 (10)	40 (6)	39 (6)	34 (7)	38 (8)	34 (5)	35 (6)	39 (5)	45 (6)	48 (6)	46 (6)	41 (7)	36 (8)	27 (6)	25 (5)
NH	39 (6)	34 (5)	26 (5)	30 (5)	30 (6)	33 (8)	28 (6)	31 (6)	29 (5)	27 (4)	56 (6)	60 (5)	62 (6)	57 (6)	46 (7)	38 (6)	41 (6)
NJ	37 (5)	37 (5)	30 (4)	29 (5)	28 (6)	30 (5)	30 (5)	32 (5)	25 (5)	29 (5)	56 (6)	67 (5)	68 (5)	61 (5)	53 (5)	45 (5)	46 (6)
NM	42 (13)	30 (10)	35 (11)	26 (8)	26 (7)	33 (7)	26 (7)	33 (7)	34 (7)	28 (6)	50 (7)	52 (7)	51 (7)	47 (7)	48 (8)	41 (7)	36 (7)
NV	39 (6)	37 (6)	31 (7)	31 (6)	34 (6)	32 (6)	33 (7)	36 (5)	27 (6)	27 (5)	53 (7)	59 (7)	55 (6)	40 (6)	46 (7)	34 (5)	38 (6)
NY	34 (5)	35 (4)	34 (4)	29 (4)	31 (5)	31 (5)	28 (4)	30 (4)	32 (4)	26 (4)	63 (4)	72 (4)	68 (5)	59 (4)	51 (4)	50 (4)	43 (4)

OH	51 (5)	45 (5)	41 (5)	38 (4)	35 (5)	36 (5)	41 (5)	42 (4)	42 (5)	38 (5)	51 (5)	56 (5)	57 (5)	49 (5)	40 (4)	33 (4)	37 (5)
OK	50 (6)	49 (7)	42 (7)	43 (7)	31 (7)	41 (6)	45 (7)	41 (6)	39 (6)	41 (5)	38 (6)	46 (7)	48 (6)	40 (6)	36 (6)	27 (5)	26 (5)
OR	35 (5)	36 (5)	33 (5)	35 (6)	34 (6)	28 (5)	35 (6)	33 (5)	30 (5)	28 (4)	48 (6)	57 (7)	56 (6)	50 (6)	46 (6)	37 (6)	36 (5)
PA	39 (5)	40 (4)	37 (4)	36 (4)	36 (6)	37 (5)	33 (4)	38 (4)	35 (4)	36 (5)	52 (5)	56 (5)	57 (5)	48 (5)	45 (4)	39 (4)	37 (5)
RI	39 (7)	31 (6)	17 (7)	25 (6)	26 (6)	21 (7)	27 (7)	27 (5)	21 (4)	25 (4)	54 (6)	57 (6)	60 (7)	52 (7)	46 (8)	35 (6)	37 (6)
SC	49 (6)	49 (6)	43 (6)	39 (6)	40 (6)	43 (6)	37 (6)	38 (5)	43 (5)	35 (5)	49 (6)	61 (6)	52 (6)	43 (6)	39 (5)	29 (5)	32 (5)
SD	43 (9)	41 (8)	42 (9)	41 (7)	43 (8)	36 (10)	42 (10)	36 (6)	41 (6)	40 (5)	44 (6)	46 (7)	46 (7)	37 (7)	39 (9)	33 (6)	29 (6)
TN	52 (6)	50 (6)	50 (6)	44 (6)	44 (6)	45 (5)	41 (5)	46 (5)	41 (6)	40 (5)	45 (6)	53 (6)	47 (6)	39 (5)	38 (5)	33 (5)	29 (5)
TX	43 (5)	38 (5)	36 (5)	37 (4)	32 (6)	30 (4)	35 (4)	36 (4)	39 (4)	33 (5)	50 (5)	63 (4)	56 (5)	48 (4)	44 (4)	37 (4)	35 (5)
UT	45 (6)	48 (7)	39 (8)	37 (7)	32 (6)	38 (7)	42 (7)	38 (5)	38 (5)	35 (5)	49 (5)	47 (6)	45 (6)	44 (6)	36 (6)	34 (5)	29 (5)
VA	42 (5)	39 (5)	35 (5)	33 (5)	33 (6)	33 (5)	36 (5)	36 (5)	31 (5)	35 (5)	58 (5)	67 (5)	66 (5)	56 (5)	52 (4)	41 (5)	38 (5)
VT	30 (8)	33 (7)	22 (7)	27 (7)	33 (8)	30 (10)	21 (9)	26 (6)	19 (6)	27 (5)	55 (6)	64 (7)	62 (8)	49 (8)	52 (8)	42 (7)	37 (7)
WA	30 (6)	30 (5)	26 (4)	30 (5)	32 (5)	26 (5)	30 (5)	31 (5)	28 (5)	25 (4)	61 (5)	59 (6)	63 (5)	59 (5)	50 (5)	42 (5)	44 (5)
WI	38 (5)	32 (5)	29 (5)	30 (5)	29 (5)	29 (5)	34 (6)	31 (5)	29 (4)	31 (5)	54 (6)	64 (5)	58 (5)	52 (5)	43 (5)	43 (5)	41 (5)
WV	57 (6)	58 (7)	44 (9)	51 (7)	44 (7)	48 (7)	58 (8)	46 (5)	50 (7)	47 (6)	37 (6)	40 (7)	46 (7)	34 (6)	29 (6)	27 (6)	23 (6)
WY	61 (11)	67 (12)	52 (11)	52 (10)	50 (10)	46 (11)	48 (11)	47 (7)	44 (8)	44 (6)	35 (7)	36 (8)	40 (9)	37 (9)	24 (8)	25 (6)	14 (5)

Table 2. Governor approval (margin of error in parentheses)

State	Late Apr. 21	Early May 21	Late May 21	Late Jun. 21	Late Jul. 21	Late Aug. 21	Sep. 21	Oct. 21	Nov. 21	Dec- Jan. 21	Feb.	Apr. 21	Jun. 21	Sep. 21	Nov .21	Dec. - Jan. 22	Mar. 22
Nat	64 (1)	59 (1)	54 (1)	53 (1)	51 (1)	48 (1)	48 (1)	48 (1)	47 (1)	47 (1)	46 (1)	52 (1)	52 (1)	45 (1)	45 (1)	38 (1)	39 (1)
AK	61 (14)	53 (10)	48 (13)	51 (11)	47 (11)	42 (13)	34 (11)	48 (7)	45 (8)	41 (6)	39 (7)	52 (9)	48 (9)	34 (9)	29 (9)	28 (7)	32 (8)
AL	60 (6)	52 (6)	46 (7)	48 (6)	47 (6)	44 (5)	46 (6)	46 (6)	45 (6)	45 (6)	54 (6)	45 (6)	49 (6)	41 (6)	43 (6)	32 (5)	31 (5)
AR	65 (6)	61 (7)	52 (7)	47 (7)	41 (7)	43 (6)	52 (8)	50 (6)	36 (7)	41 (6)	47 (6)	48 (7)	48 (7)	37 (6)	35 (7)	34 (6)	35 (6)
AZ	56 (6)	57 (7)	41 (5)	33 (5)	30 (7)	30 (5)	37 (6)	36 (5)	36 (6)	28 (5)	32 (6)	38 (7)	37 (5)	28 (5)	32 (5)	27 (5)	28 (5)
CA	70 (5)	67 (4)	58 (4)	58 (4)	58 (6)	47 (4)	51 (4)	48 (4)	47 (4)	42 (5)	45 (5)	52 (5)	51 (5)	54 (4)	53 (3)	44 (4)	43 (4)
CO	64 (5)	54 (6)	52 (6)	52 (6)	51 (7)	52 (5)	52 (7)	56 (5)	48 (6)	55 (5)	52 (6)	62 (5)	57 (6)	53 (6)	47 (5)	41 (5)	40 (5)
CT	66 (6)	66 (6)	64 (8)	59 (6)	59 (6)	65 (6)	57 (6)	63 (5)	62 (6)	59 (5)	61 (6)	65 (6)	72 (5)	62 (6)	63 (6)	51 (6)	50 (5)
DE	69 (7)	62 (6)	53 (7)	54 (6)	51 (8)	60 (8)	48 (8)	47 (6)	54 (6)	51 (5)	53 (7)	58 (7)	54 (7)	53 (6)	46 (7)	41 (6)	42 (6)
FL	46 (5)	46 (4)	49 (5)	43 (4)	40 (6)	29 (4)	34 (4)	39 (4)	38 (4)	38 (5)	35 (5)	46 (5)	45 (5)	36 (4)	42 (4)	37 (4)	37 (5)
GA	53 (5)	33 (5)	35 (6)	43 (5)	37 (6)	36 (5)	38 (5)	41 (5)	37 (5)	34 (5)	35 (5)	44 (6)	40 (6)	33 (5)	35 (4)	29 (4)	31 (5)
HI	36 (8)	35 (9)	41 (8)	43 (6)	39 (7)	31 (8)	31 (8)	28 (5)	37 (7)	39 (5)	47 (7)	39 (6)	44 (7)	38 (6)	44 (7)	34 (6)	37 (6)
IA	52 (6)	36 (6)	37 (7)	37 (6)	28 (6)	25 (7)	27 (7)	27 (5)	32 (5)	31 (5)	32 (6)	35 (6)	38 (6)	28 (5)	32 (6)	27 (5)	30 (5)
ID	64 (6)	54 (6)	51 (6)	49 (6)	42 (6)	34 (8)	46 (7)	41 (7)	36 (6)	31 (5)	33 (5)	43 (6)	44 (7)	30 (5)	27 (6)	32 (6)	31 (6)
IL	63 (5)	54 (5)	52 (5)	58 (5)	52 (6)	57 (5)	50 (5)	50 (4)	48 (5)	51 (5)	45 (6)	51 (5)	55 (5)	52 (5)	54 (4)	39 (4)	42 (5)
IN	71 (5)	59 (6)	56 (6)	56 (6)	50 (7)	47 (5)	46 (6)	49 (5)	45 (6)	43 (5)	54 (6)	50 (6)	43 (6)	46 (6)	41 (6)	31 (5)	33 (5)
KS	68 (6)	58 (6)	57 (8)	51 (7)	50 (6)	46 (6)	51 (7)	51 (7)	51 (6)	51 (5)	44 (6)	49 (6)	47 (6)	41 (6)	42 (7)	34 (6)	32 (6)

KY	79 (4)	71 (5)	63 (7)	62 (6)	59 (6)	57 (5)	57 (7)	55 (5)	55 (5)	56 (5)	52 (6)	57 (6)	60 (5)	51 (6)	44 (6)	46 (6)	48 (5)
LA	67 (6)	67 (6)	60 (7)	64 (7)	50 (7)	52 (6)	43 (8)	49 (6)	48 (6)	49 (5)	43 (7)	52 (7)	51 (6)	53 (7)	43 (7)	38 (6)	44 (7)
MA	80 (4)	77 (4)	72 (5)	70 (5)	70 (6)	68 (5)	71 (5)	65 (5)	64 (5)	65 (5)	59 (5)	68 (5)	68 (6)	64 (5)	58 (5)	49 (5)	55 (5)
MD	79 (5)	72 (5)	69 (6)	69 (5)	75 (5)	71 (5)	67 (6)	66 (5)	67 (6)	66 (5)	65 (6)	61 (6)	70 (5)	60 (5)	64 (5)	55 (5)	57 (5)
ME	67 (6)	57 (6)	50 (6)	50 (6)	54 (7)	54 (7)	52 (7)	54 (5)	58 (5)	53 (5)	52 (5)	57 (5)	55 (6)	51 (6)	48 (6)	41 (6)	43 (6)
MI	62 (5)	62 (5)	59 (5)	69 (5)	67 (6)	64 (5)	53 (6)	54 (5)	54 (5)	55 (5)	52 (5)	55 (5)	58 (6)	51 (5)	45 (5)	40 (4)	43 (4)
MN	71 (5)	62 (6)	59 (6)	54 (5)	52 (6)	51 (5)	49 (8)	50 (5)	50 (5)	57 (5)	52 (5)	53 (6)	52 (5)	46 (6)	53 (6)	40 (5)	40 (5)
MO	59 (5)	49 (5)	42 (6)	44 (5)	38 (6)	39 (5)	37 (6)	41 (5)	38 (5)	31 (5)	33 (5)	42 (6)	38 (5)	34 (5)	32 (5)	30 (4)	27 (4)
MS	56 (7)	53 (7)	54 (9)	50 (7)	42 (7)	34 (7)	35 (8)	40 (6)	31 (6)	33 (6)	34 (6)	44 (6)	41 (7)	28 (6)	34 (7)	24 (6)	29 (6)
MT	59 (8)	62 (7)	57 (11)	57 (7)	53 (7)	49 (8)	45 (8)	49 (6)	47 (6)	46 (5)	37 (6)	46 (7)	48 (7)	42 (7)	39 (7)	37 (6)	35 (6)
NC	60 (5)	60 (5)	52 (5)	49 (5)	48 (6)	52 (5)	51 (6)	48 (4)	51 (5)	52 (5)	50 (5)	51 (5)	53 (5)	46 (5)	47 (5)	43 (5)	40 (5)
ND	66 (11)	54 (9)	63 (9)	64 (9)	58 (9)	53 (9)	51 (9)	43 (6)	30 (6)	41 (5)	38 (6)	42 (6)	37 (7)	41 (7)	30 (7)	29 (6)	36 (7)
NE	63 (7)	53 (8)	51 (10)	50 (6)	41 (6)	40 (7)	42 (9)	40 (5)	39 (6)	37 (5)	39 (6)	43 (6)	41 (6)	39 (7)	34 (8)	31 (6)	28 (6)
NH	74 (6)	71 (5)	68 (6)	71 (5)	64 (6)	63 (8)	65 (7)	55 (6)	60 (6)	61 (4)	61 (6)	63 (5)	63 (6)	56 (6)	41 (7)	42 (6)	46 (6)
NJ	65 (5)	67 (5)	58 (5)	66 (5)	60 (7)	60 (5)	58 (5)	62 (5)	59 (6)	56 (5)	51 (6)	60 (6)	62 (5)	60 (5)	58 (5)	48 (5)	52 (6)
NM	64 (13)	67 (10)	54 (11)	42 (9)	53 (8)	53 (8)	48 (8)	48 (7)	46 (7)	48 (6)	47 (7)	53 (7)	54 (7)	50 (7)	44 (8)	46 (7)	40 (7)
NV	60 (6)	60 (6)	55 (7)	51 (6)	47 (7)	41 (6)	44 (8)	50 (6)	50 (6)	44 (5)	44 (7)	53 (7)	57 (6)	42 (6)	44 (7)	39 (5)	41 (6)
NY	70 (5)	70 (4)	69 (4)	64 (4)	71 (5)	61 (5)	58 (4)	57 (4)	60 (4)	63 (5)	53 (5)	60 (4)	62 (5)	57 (4)	52 (4)	50 (4)	42 (4)
OH	81 (4)	77 (4)	69 (5)	66 (4)	58 (5)	58 (5)	56 (5)	59 (4)	56 (5)	50 (5)	57 (5)	62 (5)	61 (5)	49 (5)	48 (4)	34 (4)	41 (5)
OK	51 (6)	48 (7)	44 (7)	45 (7)	34 (7)	35 (6)	39 (7)	36 (6)	39 (6)	33 (5)	37 (6)	50 (7)	47 (6)	32 (6)	37 (6)	33 (5)	23 (5)

OR	61 (5)	53 (5)	54 (5)	48 (6)	47 (6)	39 (5)	46 (7)	43 (6)	44 (5)	47 (5)	39 (6)	50 (7)	48 (6)	42 (6)	44 (6)	33 (5)	36 (5)
PA	57 (5)	56 (5)	52 (5)	48 (4)	52 (6)	48 (5)	48 (5)	47 (4)	43 (5)	44 (5)	39 (5)	44 (5)	47 (5)	41 (5)	44 (4)	38 (4)	37 (5)
RI	74 (6)	72 (6)	66 (9)	63 (6)	71 (6)	60 (8)	62 (8)	58 (6)	58 (5)	54 (5)	40 (6)	50 (7)	60 (7)	52 (7)	51 (8)	34 (6)	40 (6)
SC	51 (6)	49 (6)	46 (6)	44 (6)	44 (6)	36 (6)	37 (6)	38 (5)	41 (5)	35 (5)	42 (6)	54 (6)	46 (6)	36 (6)	39 (5)	34 (5)	31 (5)
SD	43 (9)	45 (8)	40 (9)	54 (7)	54 (8)	48 (10)	42 (10)	38 (6)	38 (6)	37 (5)	43 (6)	48 (7)	47 (7)	41 (7)	31 (8)	38 (6)	41 (6)
TN	62 (5)	51 (6)	50 (6)	46 (6)	44 (6)	40 (5)	38 (5)	43 (5)	43 (6)	35 (5)	37 (5)	41 (6)	49 (6)	31 (5)	33 (5)	33 (5)	29 (5)
TX	61 (5)	52 (5)	49 (5)	45 (4)	38 (6)	35 (4)	40 (4)	40 (4)	43 (4)	38 (5)	41 (5)	46 (4)	41 (5)	32 (4)	38 (4)	31 (4)	31 (5)
UT	60 (6)	57 (7)	56 (8)	49 (7)	44 (6)	44 (8)	46 (7)	42 (5)	40 (5)	40 (5)	51 (5)	55 (6)	50 (6)	43 (6)	39 (6)	37 (6)	36 (6)
VA	59 (5)	54 (5)	54 (5)	49 (5)	59 (6)	46 (5)	46 (5)	51 (5)	48 (6)	50 (5)	49 (5)	61 (5)	64 (5)	49 (5)	51 (4)	34 (5)	32 (5)
VT	72 (8)	75 (7)	74 (8)	75 (7)	75 (7)	76 (9)	70 (11)	78 (6)	77 (6)	74 (5)	71 (6)	74 (6)	78 (7)	69 (8)	70 (8)	53 (7)	59 (7)
WA	70 (6)	65 (5)	53 (5)	58 (6)	57 (6)	50 (5)	51 (5)	54 (5)	55 (5)	54 (5)	55 (5)	58 (6)	60 (6)	55 (5)	53 (5)	42 (5)	46 (5)
WI	56 (5)	56 (5)	50 (6)	48 (5)	46 (5)	43 (5)	39 (6)	41 (5)	48 (4)	47 (5)	47 (6)	56 (5)	53 (6)	42 (5)	41 (5)	37 (5)	41 (5)
WV	78 (5)	73 (6)	67 (9)	65 (7)	54 (7)	56 (7)	49 (8)	48 (5)	55 (7)	54 (6)	55 (6)	60 (7)	61 (6)	54 (6)	41 (7)	40 (6)	43 (7)
WY	65 (11)	54 (13)	59 (11)	55 (10)	60 (10)	48 (11)	42 (11)	51 (7)	43 (7)	39 (6)	37 (7)	46 (8)	50 (9)	41 (9)	34 (9)	32 (7)	40 (7)