



1



2

スキー登山とは何か

出版者のHokkaidoWilds.orgについて

ニセコBC英語表記地形図作成プロジェクト

『Niseko Backcountry』の掲載内容

3

3

HOKKAIDOWILDS.ORG

『Niseko Backcountry』英語表記地形図



山スキー

サイドカントリースキー

スキー登山とは何か

区域外滑走

バックカントリースキー

4

4

スキー登山とは何か

HOKKAIDOWILDS.ORG
『Niseko Backcountry』英語表記地形図



「スキー場管理区域外の山岳地でスキーやスノーボードによる滑走を目的にリフト、ゴンドラ等を使用せず、自力による登山行為を伴う入山」 (北海道警察、2019)

バックカントリースキー

スキー登山

サイドカントリースキー
リフトを使ってスキー場からアクセスした
管理区域外滑走

5

5

サイドカントリー

アンヌプリ第2ゲート
区域外への簡単なアクセス

両方ともバックカントリースキー

ニセコオートルート
ひらふ〜雷電山 (1泊2日)

スキー登山

6

6



区別が大事であるような 大事でないような・・・

7

7

サイドカントリーの遭難者が非常に多い

HOKKAIDOWILDS.ORG
『Niseko Backcountry』 英語表記地形図



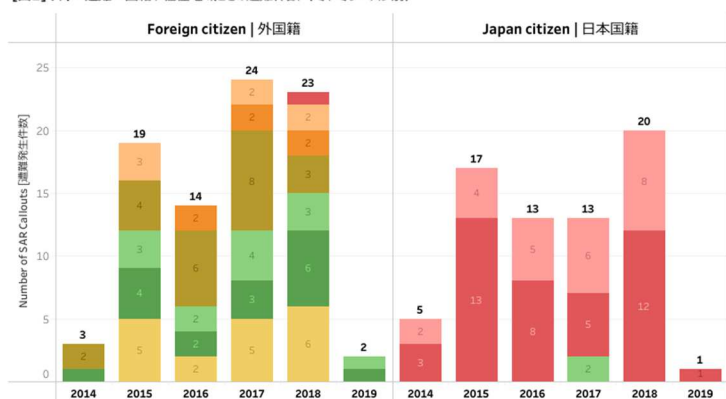
■ 2014年～2019年の北海道警察山岳遭難状況データ

■ 全道のデータ

■ スキー遭難者

- 外国人：平均20人／年
- 日本人：平均16人／年
- 平均は2015年～2018年
- データ： <https://hokw.jp/sonan-ja>

[Fig 1] **SIDECOUNTRY** - Annual SAR callouts in Hokkaido by winter season, citizenship and residence
 [図1] スキー遭難 - 国籍や在住地域ごとの遭難件数 (冬、冬シーズン別)



Note: Figure prepared by HokkaidoWilds.org using adapted Hokkaido Police Mountain SAR Data | 図作成者: HokkaidoWilds.org、データ出典: 北海道警察山岳遭難状況 (図作成者による解釈を含む) .

HOKKAIDO
WILDS

8

8

スキー登山の遭難者

比較的に少ない

- スキー登山遭難者
 - 外国人：平均2人／年
 - 日本人：平均6人／年
 - 平均は2015年～2018年
 - データ：<https://hokw.jp/sonan-ja>

HOKKAIDOWILDS.ORG
『Niseko Backcountry』英語表記地形図

[Fig 4] BACKCOUNTRY - Annual SAR callouts in Hokkaido by winter season, citizenship and residence
 [図4] スキー登山遭難 - 国籍や在住地域ごとの遭難件数（冬、冬シーズン別）

Year	Foreign citizen (外国人)	Japan citizen (日本国籍)
2014	3	4
2015	1	6
2016	3	6
2017	1	2
2018	3	10
2019	1	1

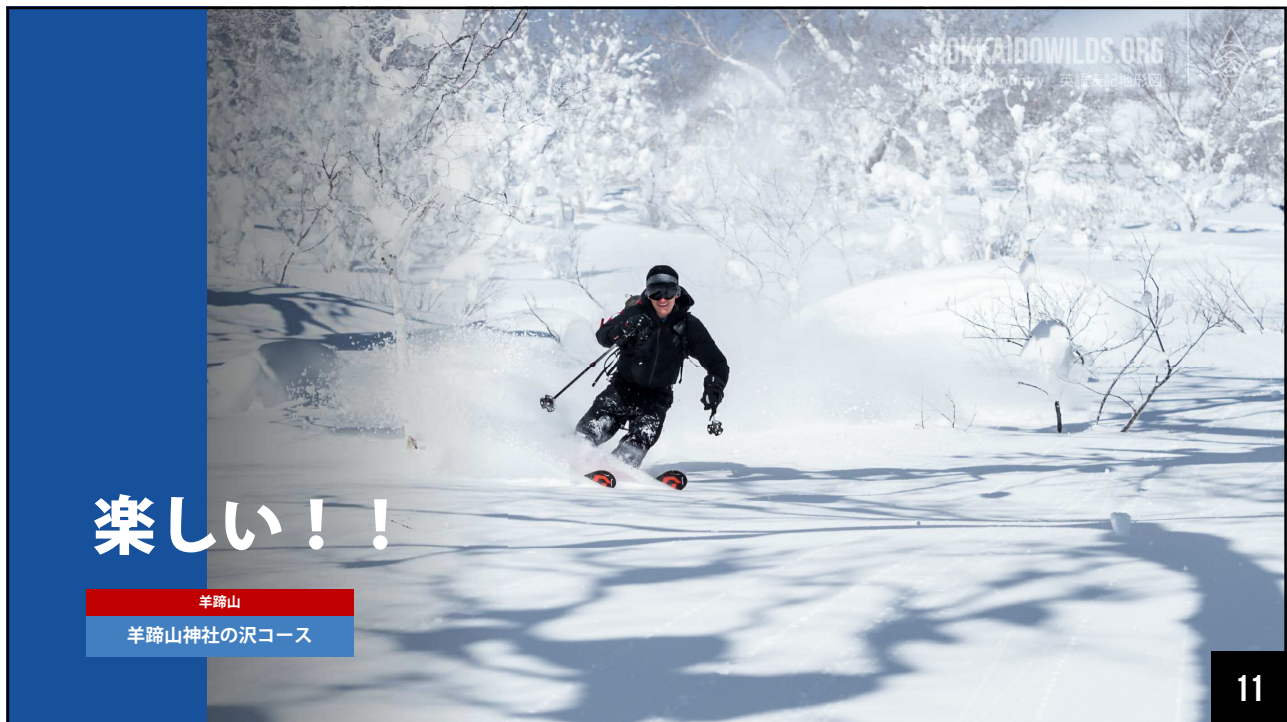
Note: Figure prepared by HokkaidoWilds.org using adapted Hokkaido Police Mountain SAR Data |
 図作成者：HokkaidoWilds.org, データ出典：北海道警山岳遭難状況（図作成者による解釈を含む）。

9

いずれも・・・

HOKKAIDOWILDS.ORG
『Niseko Backcountry』英語表記地形図

10



11



12



13



14



15



16



17



18



19

スキー登山とは何か

HOKKAIDOWILDS.ORG
『Niseko Backcountry』英語表記地形図

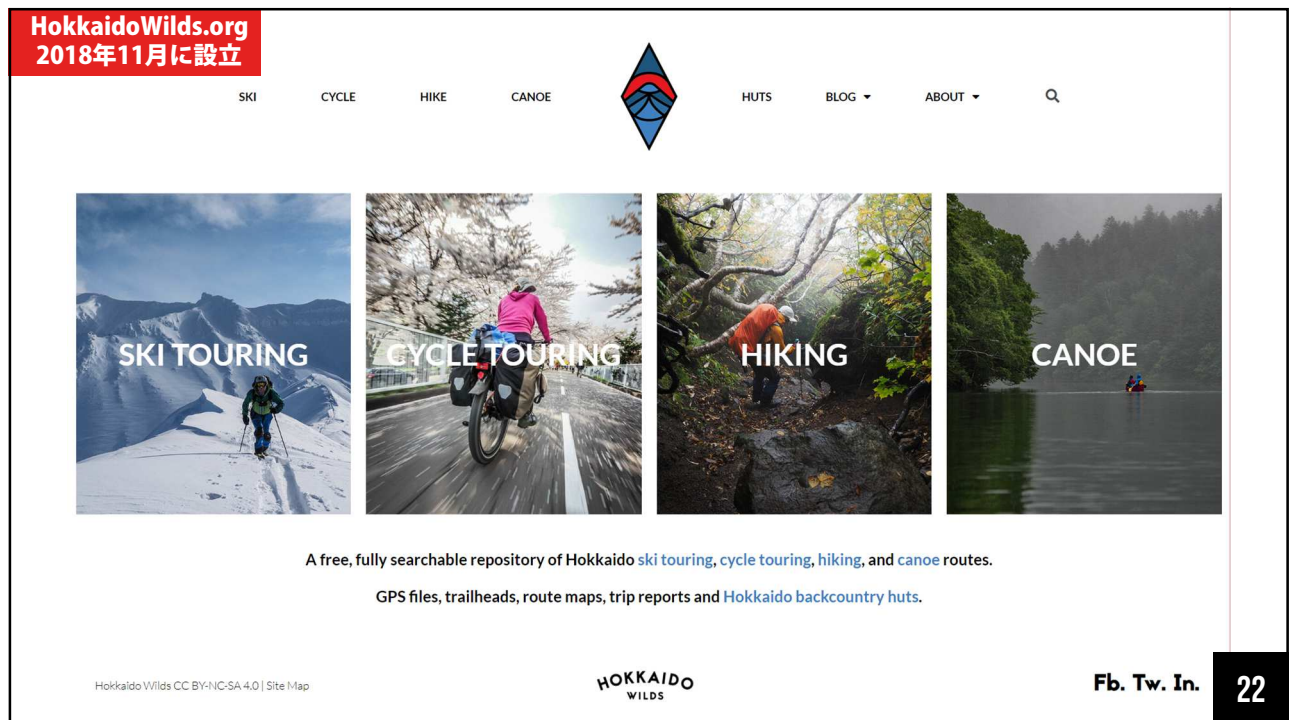
「スキー場管理区域外の山岳地でスキーやスノーボードによる滑走を目的にリフト、ゴンドラ等を使用せず、自力による登山行為を伴う入山」で、冬山における高度なリスク管理知識と経験が求められる行為である

20

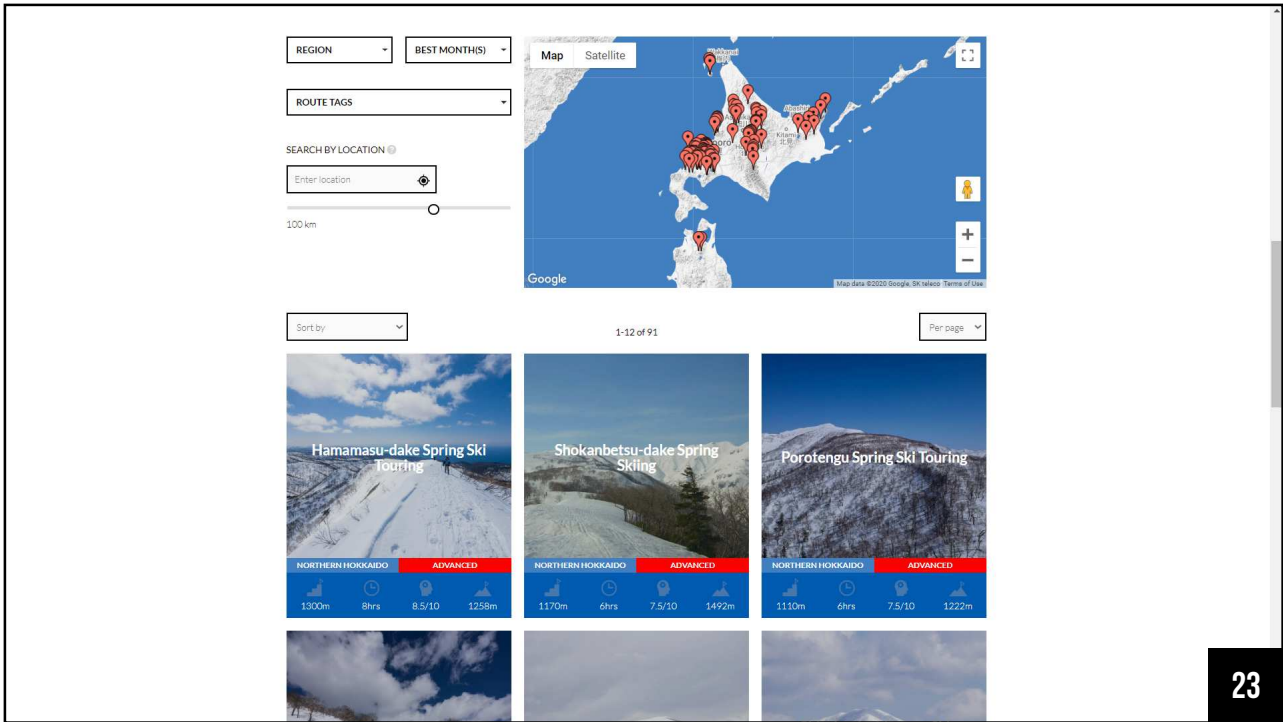
20



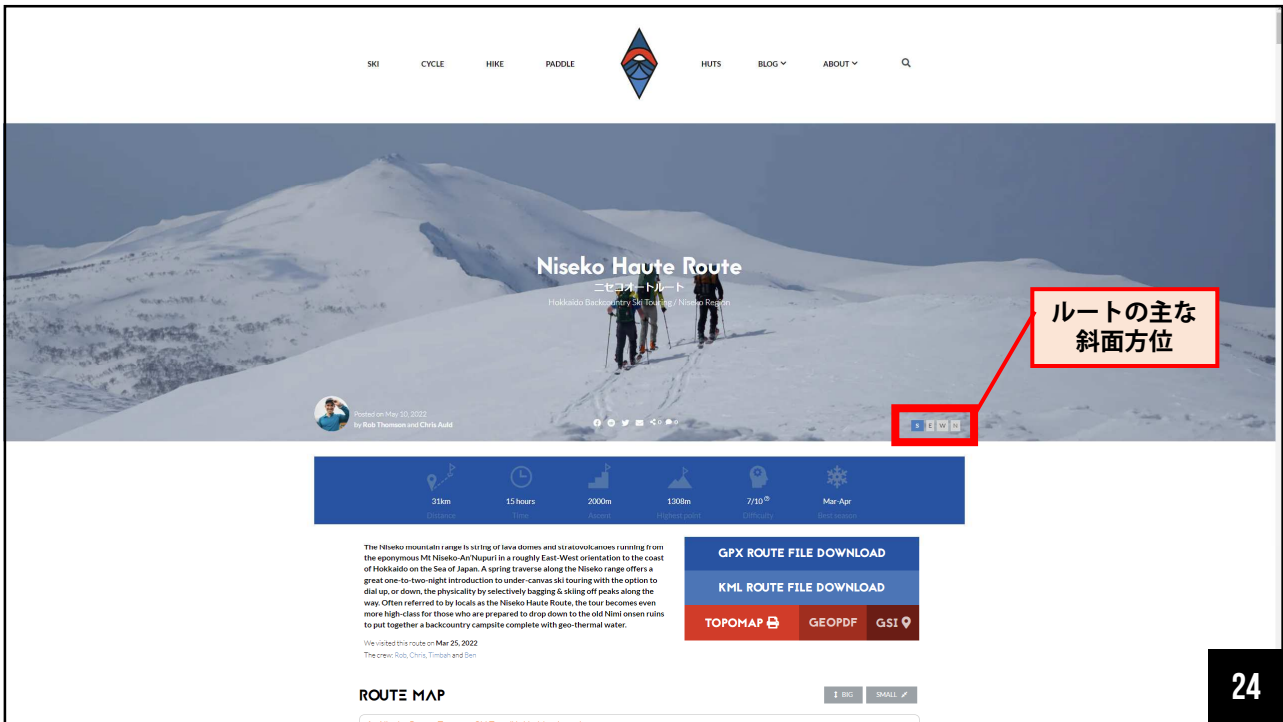
21



22



23



24

2022.02.28 Monday

author : ニセコ雪崩調査班

ニセコなだれ情報 第073号 Niseko Avalanche Info No.073

山麓-3度降雪10cm西風や強く吹雪境界不良 モイワ800m-6.2度西北西11.9m 降雪15cm雪底100cmふきだまり60cm発達 アンヌプリ1150m-9.5度西北西11m 樹間20m/s降雪風はさわやかウインドクラスト発達 ヒラフ1250m-13度西15m/s降雪 風はさわやか吹雪境界不良 日本海岸線岬西北西14m 神威岬西北西8m高圧 1010hPa波高1.7m 他データ別項記載。

等圧線偏せ海上、山ともに吹雪、海の波は上がり波高800m以上は雪底ふきだまりが発達、東に面した雪底斜面、雪が溜まった30度斜面の雪崩リスクは高い。ふきだまり(スラブ・雪板)はまた流いが急激に急を増しており制動で弱体化しやす。各山頂ゲートは閉じられる。パトリールの指示に従うこと。ロープをくぐらないこと。今日は森の中を渡ることを避ける。グレンでも境界が通い、転倒衝突に注意。体温感覚が低い。体温測定、凍傷に注意。春はまだ遠い。

Moira base: -3°C, 10cm new snow, moderate westerly, snow storm, poor visibility. Moira 800m: -5.2°C, WNW11.9m/s, 15cm new snow, 100cm cornice development, 60cm snow drift development. Annupuri 1150m: -9.5°C, WNW11m/s, gusts to 20m/s, new snow blown off and wind crust developing. Hirafu 1250m: -13°C, W15m/s, new snow blown off blizzard. Coastal data - Denkei cape: WNW14m/s, Kamui cape: WNW8m/s, 1010hPa, 1.7m waves. Mountain weather data on a separate site.

The isobars are close together, the seas are stormy with an increasing swell and the mountains are in blizzard conditions with cornice and snowdrift development above 800m. East facing cornice slopes are accumulating snow with high avalanche risk on 30deg slopes. At the moment snowdrift development(hard slabs) is shallow, however development is rapidly increasing and there is the risk of drifts fracturing on weak layers with little stimulation. Peak gates will be closed. Please be careful of your decision. Do not duck ropes. Riding in the trees is not recommended today. Visibility is limited, be careful of crashing into trees or rocks. It feels cold today, beware hypothermia and frostbite, yet.

ニセコ雪崩情報

東斜面が危険

日本雪崩ネットワーク (後志エリア)

雪崩危険性図

25

SKI CYCLE HIKE PADDLE HUTS BLOG ABOUT Q

Niseko Haute Route
ニセコハイトルート
Hokkaido Backcountry Ski Touring / Niseko Region

Posted on May 10, 2022
by Rob Thomson and Chris Auld

31km 15 hours 2000m 1300m 7/10th Mar-Apr

印刷できる PDF地形図

The Niseko mountain range is a string of lava domes and stratovolcanoes running from the eponymous Mt Niseko-An/Nupuri in a roughly East-West orientation to the coast of Hokkaido on the Sea of Japan. A spring traverse along the Niseko range offers a great one-to-two night introduction to under-canvas ski touring with the option to dial up, or down, the physicality by selectively bagging & skiing off peaks along the way. Chosen here is a moderate level of difficulty. The Niseko Haute Route, the tour becomes even more high-class for those who are prepared to drop down to the coast to put together a backcountry campsite complete with geo-thermal water.

We visited this route on Mar 25, 2022
The crew: Rob, Chris, Timah and Ben

ROUTE MAP

ルートの主な斜面方位

距離、時間、登り、難易度、適している時期

各種GPSファイルのダウンロード

国土地理院地図へのリンク

GPX ROUTE FILE DOWNLOAD
KML ROUTE FILE DOWNLOAD
TOPOMAP **GEOPDF** **GSI**

26

ROUTE MAP

1 - Niseko Range Traverse Ski Tour (Hokkaido, Japan)

View Full Version Send to Device 31.1 km +1,967 m / -3,167 m

PHOTO GALLERY

オンラインの
ルートマップ

取材時の写真

27

27

ルートが北海道
のどこにあるか

ルートの特記事項

NEED TO KNOW DETAILS

LOCATION

The Niseko Range is in the southwest of Hokkaido, about 2.5hrs (90km) drive west of Sapporo City. It stretches east to west, from the bustling ski resort town of Niseko to the Japan Sea coast. Skiers can start the traverse at either end of the range (see more details below).

GENERAL NOTES

↑ [TRAILHEAD](#) (opens in Google Maps)

The moniker Niseko "Haute Route" was borrowed by locals from the European version, but the concept is the same: a multi-day, high-level ski tour route up in the alpine, ticking off as many of the major peaks in the range as possible along the way. When visibility is good - as is often the case in spring - this is an incredibly inspiring route with plenty of variation. The descents off Niseko-Anupuri, Iwanopuri, Nitonupuri, Chisenupuri, Mekunai-dake, and Raiden-yama are also amazing. The final descent from Raiden-yama to the sea is a particularly unique experience that caps off an amazing volcanic traverse.

- Direction:** Most skiers complete the traverse east to west. That is, from Niseko to the sea. This direction involves about 20% less climbing overall (and also means 20% more downhill). Symbolically, this direction has an aesthetic appeal. The escape from the maddening crowds of the resort area, all the way to the wild ocean...
- Where to start:** If starting in the east, most skiers start at the road-end car park near Goshiki Onsen on Route 58. A 'true' traverse might start at the base of any of the four major ski resorts of Niseko, however hiker access is limited on the southeast side of Niseko-Anupuri - consider taking one of the first lifts (8:30am) up and hiking to the Niseko-Anupuri peak from there. The King Lift at the Niseko Grand Hirafu ski area gives most direct access to the peak via Gate 3. Note, however, that backcountry gate openings are not guaranteed (see the [Niseko Rules](#) here), and the west face of Niseko-Anupuri can be horribly wind-affected and icy, particularly on early-spring mornings. If the purist in you must hike from the base of Niseko-Anupuri, then a ridge-line hike to the west of Osawa Bowl starting from just east of the Niseko Moleka Ski Area Center Lodge ([around here](#)) might be feasible, however make sure to start well before 8:30am, as the Osawa Bowl and Back Bowl sees a huge number of sidecountry skiers descending from first lifts (see [Moleka Ski Area map](#) here, and [topomaps](#) here).
- Where to end:** The Japan Sea coast side of Raiden-yama is a labyrinth of rugged cliffs, high narrow spurs, wind-stripped ridgelines, and deep, tightly wooded gullies. As such, there's no pleasant way to finish close to Cape Raiden-misaki 雷電岬 (location), which would, arguably, be the purist's choice of route terminus. Therefore, most skiers opt to ski from the Raiden-yama summit due north towards Iwanai Town. Arguably the most aesthetic balance between access, skiing quality, and a true sea-side finish is to ski the ridge north from Maeraiden-yama past the 997m point, just west of Narukami Falls 鳴神の滝 (location), and northwards to the little abandoned fishing port at Shikishishinawa 敷島内 (location). There's a small parking area there and a bus stop (6 buses daily, see [Transport Options](#) below). That ridge offers very nice skiing if not wind-packed for most of the season. Skiers tempted to ski down to the derelict Asahi Onsen 朝日温泉 (location) via Raiden-toge Pass 雷電峠 and on to the derelict Raiden Onsen 雷電温泉 (location) should expect a solid dose of adventure skiing - think steep, very narrow and tightly wooded spurs with questionable snow cover, heading into tightly wooded gullies and sketchy traverses. In theory, a descent from Raiden-yama west-southwest to the coast from Raiden-toge Pass to the coast at Rankoshi Town (around here) is also possible. However, the Rankoshi Side offers no services - the Iwanai side offers better public transport options back to Niseko, a good array of restaurant options, and even onsen.
- When to go:** The Niseko Traverse can be completed at any time during the ski season, from December till April. Surface and weather conditions are best in spring (March till April) - expect fast hard-pack and/or corn and good weather windows of up to 22 hours 3 days. In deep winter (December till end of February), surface conditions are as deep as they get anywhere in the world, and weather windows of more than 12 hours are rare.
- Route timing:** Spring - 10-20hrs (1-2 days) | In spring with firm surface conditions, fit skiers have been known to ski from Goshiki to the sea, hitting all peaks along the way (30km, 2000m+ ascent), in a single one-day push of under 11 hours (see [Blue Zaichar's report](#) here). Winter - 3-4 days | In the mid-winter months, the traverse becomes a much more challenging ordeal - with shorter daylight hours, deep snow, and dramatically shorter alpine weather windows, expect up to three days or more, with relatively little opportunity to remain in the alpine for the duration of the traverse (see [Aaron Jamieson's late February report](#) here and the [Vlog East](#) video here).
- Peaks along the way:** Niseko-Anupuri ニセコアンヌプリ (1308m), Iwanopuri イワノスプリ (1116m), Nitonupuri ニトスプリ (1080m), Chisenupuri チセツスプリ (1134m), Shikunage-dake シクナゲ岳 (1074m), Shirakaba-yama 白樺山 (954m), Mekunai-dake 根無内岳 (980m), Mekunai-dake 根無内岳 (1202m), Raiden-yama 雷電山 (1211m).
- Escape routes:** The beauty of the Niseko Haute Route is the plethora of good escape routes along the way. If at any point

28

28

山小屋がある場合はその情報

ルート案内

所要時間

アクセス（公共交通機関の有無、駐車場／駐車について）

HUT ROUTE DETAILS

camp on the mountain with the winter season to last, in general, the peaks are exposed to the elements. Skiers may wish to sacrifice some elevation gain to drop down below the twelve to dig in for the night. The Nihini Onsen ruins (新見温泉跡地) (location) make for a unique overnight halfway along the range - note that as of 2022 there was hot water still flowing, but all buildings have been removed (only foundations remain).

None

If starting from the resort side of Niseko-Amurupuri, take a lift up to Gate 3 (Grand Hirafu ski area, King Lift #4) or Gate 2 (Amurupuri ski area, Jumbo Pair Lift #4) (trail map link), and hike to the Niseko-Amurupuri peak. Descend to Route 58. If starting from the road end on Route 58 just beyond Goshiki Onsen, park up at the large snow-cleared parking area just before the end of the snow-cleared road. Head up Iwaonupuri on the standard ascent route via the southern ridge to the looker's left of the bowl. This is a fairly mellow ascent, and the summit is flat and quite featureless. Descend the same way. While it might tempting to descend the west side from the peak, this slope is steep, rocky, and has a number of bluffs. Continue west towards Nihonupuri, via a picturesque rolling plateau. The climb up to the Nihonupuri summit is relatively short and straightforward. If snowpack conditions are stable, there's a fine descent via the west face of Nihonupuri to the snowed-in Route 46. A more conservative descent would be via the broad ridge to the skier's left (south) of the west face bowl. For the ascent of Chisenupuri, we've marked on the topomap the most conservative, common route up to the peak, via the south face. If conditions allow it, connecting with the summer trail ridge would be the more direct, albeit slightly more exposed, ascent option. Descend Chisenupuri on the south or southwest aspect - the west aspect proper is often wind affected. At around 890m on the flanks of Chisenupuri, head due northwest across the broad, featureless saddle towards Shikunage-dake. The Shikunage-dake peak is easily gained, and the descent north off the peak towards Shikunage-numa is very short-lived. Continue in a north-then-northwest arc, following a broad ridge-like feature towards Shirakaba-yama. The descent from the 1041m point north of Shikunage-numa is very mellow, but the vast plateau-like descent is fast and inspiring. Make the long traversing ascent to the diminutive Shirakaba-yama. From here, skiers need to decide if they'll push on in the alpine, or drop down to Nihini Onsen to camp. The descent to Nihini Onsen wipes off an additional 250m of vertical gain (even compared with just skilling to Nihini Pass), which needs to be made up for the next day. That said, the onsen hot water still flows freely at the onsen ruins (just foundations remain), so intrepid skiers may wish to indulge in the ultimate Hokkaido ski touring experience - wild onsen in the snow with a camp nearby. There's also a spring in the vicinity of the ruins, at the north end of the large pond-like pool. Regardless of whether you drop down to Nihini Onsen or not, you'll cross another road - the snowed-in Route 268. This roughly marks the half-way point in the traverse. The ascent to the Mekunai-dake summit is one of the more significant ascents in the traverse - it's long and particularly exposed to the elements. Mekunai-dake is an impressive volcanic dome with a very distinctive rocky summit. From the Mekunai-dake summit, it's a hard-packed, ratty descent down to the Panmekunai Moor, after which the final ascent of the traverse begins - the long, gradual approach to the other anticlinal featureless peak of Ralden-yama. If you've not experienced any strong wind on the traverse yet, you'll most likely experience it here. Bitter northwesterlies blow uninhibited from the Japan Sea, slamming into Ralden-yama's buttressed northwestern side. The most practical descent to the sea takes the skier along the broad northern ridge from the summit, via Maeralden-yama, skirting the 997m point, and down to the small hamlet of about five houses at Shikishimani. This ridge offers some great skilling, with views of the sea the entire way down. At the terminus of the ridge is a steep bluff, but just above the bluff is the ruins of an old house. There's a decaying access path to the house to the skier's left of the house, which will lead you to the main highway. Head just 50m southwest along the highway, and you'll come to the dilapidated Shikishimani port. Surely it's time for a celebratory swim! You can either wait for one of the six buses that stop at the Shikishimani bus stop, or walk the skin northeast along the coast road to the Iwanai Bus Terminal 若戸(スターミナル) (location).

Up | 8hrs
Down | 3hrs
Depending on the season, this route could take anywhere from 11 hours (in spring) to two to three days of around 8 hours each (in winter). There's up to 2,500m of total ascent, with about 15 hours required if NITING all peaks along the way.

Public transport:
The Niseko resort area is well serviced by public bus and rail from Sapporo City. See access details on the Niseko United website here. Access to Goshiki Onsen in the winter is by private car or taxi only. Expect to pay around 7,000yen for a taxi from central Hirafu to Goshiki Onsen. From the Baien coast, there is a public bus service running buses six times daily to and from the Iwanai Bus Terminal. From Iwanai Bus Terminal, there is a direct bus back to the Niseko resort area via Kutchan Town. If you have to escape from the route part way through, your most practical option would be to call a taxi. Note that in Hokkaido there are no taxi callout fees, no matter how far.

By car:
There is plenty of parking at the large public snow cleared parking area at the Goshiki Gate on Route 58. There's also plenty of parking at any of the ski areas around the southeast base of Niseko-Amurupuri. At the end of the route on the Baien coast, there's a small cleared parking area just before the entrance to the Nankami Tunnel 鳴神トンネル on Route 229 along the coast, just above the Shikishimani Port (location).

Print: HokkaidoWilds.org 1:25,000 TOPOMAP+
Official Topo Map Niseko-Amurupuri (ニセコアンヌプリ) - map no. NK-54-20-7-2
Official Topo Map 2: Chisenupuri (チゼンプリ) - map no. NK-54-20-7-4
Official Topo Map 3: Ralden-yama (雷電山) - map no. NK-54-20-11-2
Official Topo Map 4: Raldenmitsuki (雷電明) - map no. NK-54-20-11-1

NOTE: The official 1:25,000 topo maps (above) can be purchased for 250yen from Kinokuniya bookstores near Sapporo Station or online (in Japanese).

The main aspect skiers are exposed to on the descent and/or ascent is South. Other aspects that may also be encountered while following the route outlined on this page include: East, West, North. Therefore, keep an eye on the weather forecast a few days ahead of your trip to monitor wind, snow, and temperature. Also, since this route is in the general vicinity of the Shirbeshi area, consider looking at the Japan Avalanche Network avalanche bulletin (updated Tuesdays, Thursdays, Saturdays at 8am) or the daily Nihini Avalanche Information website. These may give extra insight into avalanche conditions in the greater area around the route.

Current JAH Avalanche Danger Ratings for the Greater Niseko Region
Region: Niseko-Amurupuri (Iwanai) - level 1
Updated: 2022/04/12 00:00

PHYSICAL MAPS

above: HokkaidoWilds.org 1:25,000 TOPOMAP+
Print: HokkaidoWilds.org 1:25,000 TOPOMAP+
Official Topo Map Niseko-Amurupuri (ニセコアンヌプリ) - map no. NK-54-20-7-2
Official Topo Map 2: Chisenupuri (チゼンプリ) - map no. NK-54-20-7-4
Official Topo Map 3: Ralden-yama (雷電山) - map no. NK-54-20-11-2
Official Topo Map 4: Raldenmitsuki (雷電明) - map no. NK-54-20-11-1

NOTE: The official 1:25,000 topo maps (above) can be purchased for 250yen from Kinokuniya bookstores near Sapporo Station or online (in Japanese).

The main aspect skiers are exposed to on the descent and/or ascent is South. Other aspects that may also be encountered while following the route outlined on this page include: East, West, North. Therefore, keep an eye on the weather forecast a few days ahead of your trip to monitor wind, snow, and temperature. Also, since this route is in the general vicinity of the Shirbeshi area, consider looking at the Japan Avalanche Network avalanche bulletin (updated Tuesdays, Thursdays, Saturdays at 8am) or the daily Nihini Avalanche Information website. These may give extra insight into avalanche conditions in the greater area around the route.

Current JAH Avalanche Danger Ratings for the Greater Niseko Region
Region: Niseko-Amurupuri (Iwanai) - level 1
Updated: 2022/04/12 00:00

ASPECT

The main aspect skiers are exposed to on the descent and/or ascent is South. Other aspects that may also be encountered while following the route outlined on this page include: East, West, North. Therefore, keep an eye on the weather forecast a few days ahead of your trip to monitor wind, snow, and temperature. Also, since this route is in the general vicinity of the Shirbeshi area, consider looking at the Japan Avalanche Network avalanche bulletin (updated Tuesdays, Thursdays, Saturdays at 8am) or the daily Nihini Avalanche Information website. These may give extra insight into avalanche conditions in the greater area around the route.

Current JAH Avalanche Danger Ratings for the Greater Niseko Region
Region: Niseko-Amurupuri (Iwanai) - level 1
Updated: 2022/04/12 00:00

SNOW AND ROUTE SAFETY

This route is heavily exposed to changing weather conditions. But, it also offers numerous 'exit' options to ski down to one of the snow-cleared road ends. Be sure to take a map so that you know where these escape routes are. Avalanche hazard is very manageable with good terrain selection options throughout the trip.

- See our tips for finding safer white ski touring in Hokkaido here.
- Notify the police of your backcountry plans online using Compass - Instructions here.

WEATHER FORECAST

Windy.com weather forecast for Niseko Route Route

Given this is a point-to-point tour you'll have options at both the start and end of the trip. Goshiki Onsen 五色温泉 (location, 800yen) is a must-visit at the eastern end of the range, as are any of the Niseko resort area onsen - our pick of the bunch is Ishimiyayama Inaba 127.1の湯 湯屋 15分 (location, 800yen), near the base of Amurupuri ski area. In Iwanai there are two great onsen up the hill by the Iwanai ski area: San san no yu サンサンの湯 (location, 500yen) and Okaerimasal onsen おかえりなさい (location, 800yen). Of course, during the traverse, there's the 'backcountry onsen' experience at Nihini onsen.

EXTRA RESOURCES

- Bliss Zolotar's report and video here
- Aaron Jamieson's report and video (plus one more report).

If you'd like to ski this route and/or explore other Niseko areas together with a local certified guide, get in touch with Jun Horie. He's a Niseko-resident guide with seven years experience advanced level ski instructing in Austria, the spaki German as well as English and Japanese. He has also guided in New Zealand and has previously led guiding expeditions in Hokkaido before going independent. See a full list of English-speaking Hokkaido Mountain Guides Association (HMGGA) guides on the HMGGA website here.

GUIDE OPTIONS

Local guide links on HokkaidoWilds

ROUTE TRIP NOTES
By Chris Auld

29

29

国土地理院の紙地図の情報

ルートの主要な斜面方位

日本雪崩ネットワークの雪崩予報

安全に関する特記事項

周辺のWindy.comの天気予報へのURL

最寄りの温泉

他の参考資料

PHYSICAL MAPS

above: HokkaidoWilds.org 1:25,000 TOPOMAP+
Print: HokkaidoWilds.org 1:25,000 TOPOMAP+
Official Topo Map Niseko-Amurupuri (ニセコアンヌプリ) - map no. NK-54-20-7-2
Official Topo Map 2: Chisenupuri (チゼンプリ) - map no. NK-54-20-7-4
Official Topo Map 3: Ralden-yama (雷電山) - map no. NK-54-20-11-2
Official Topo Map 4: Raldenmitsuki (雷電明) - map no. NK-54-20-11-1

NOTE: The official 1:25,000 topo maps (above) can be purchased for 250yen from Kinokuniya bookstores near Sapporo Station or online (in Japanese).

The main aspect skiers are exposed to on the descent and/or ascent is South. Other aspects that may also be encountered while following the route outlined on this page include: East, West, North. Therefore, keep an eye on the weather forecast a few days ahead of your trip to monitor wind, snow, and temperature. Also, since this route is in the general vicinity of the Shirbeshi area, consider looking at the Japan Avalanche Network avalanche bulletin (updated Tuesdays, Thursdays, Saturdays at 8am) or the daily Nihini Avalanche Information website. These may give extra insight into avalanche conditions in the greater area around the route.

Current JAH Avalanche Danger Ratings for the Greater Niseko Region
Region: Niseko-Amurupuri (Iwanai) - level 1
Updated: 2022/04/12 00:00

ASPECT

The main aspect skiers are exposed to on the descent and/or ascent is South. Other aspects that may also be encountered while following the route outlined on this page include: East, West, North. Therefore, keep an eye on the weather forecast a few days ahead of your trip to monitor wind, snow, and temperature. Also, since this route is in the general vicinity of the Shirbeshi area, consider looking at the Japan Avalanche Network avalanche bulletin (updated Tuesdays, Thursdays, Saturdays at 8am) or the daily Nihini Avalanche Information website. These may give extra insight into avalanche conditions in the greater area around the route.

Current JAH Avalanche Danger Ratings for the Greater Niseko Region
Region: Niseko-Amurupuri (Iwanai) - level 1
Updated: 2022/04/12 00:00

SNOW AND ROUTE SAFETY

This route is heavily exposed to changing weather conditions. But, it also offers numerous 'exit' options to ski down to one of the snow-cleared road ends. Be sure to take a map so that you know where these escape routes are. Avalanche hazard is very manageable with good terrain selection options throughout the trip.

- See our tips for finding safer white ski touring in Hokkaido here.
- Notify the police of your backcountry plans online using Compass - Instructions here.

WEATHER FORECAST

Windy.com weather forecast for Niseko Route Route

Given this is a point-to-point tour you'll have options at both the start and end of the trip. Goshiki Onsen 五色温泉 (location, 800yen) is a must-visit at the eastern end of the range, as are any of the Niseko resort area onsen - our pick of the bunch is Ishimiyayama Inaba 127.1の湯 湯屋 15分 (location, 800yen), near the base of Amurupuri ski area. In Iwanai there are two great onsen up the hill by the Iwanai ski area: San san no yu サンサンの湯 (location, 500yen) and Okaerimasal onsen おかえりなさい (location, 800yen). Of course, during the traverse, there's the 'backcountry onsen' experience at Nihini onsen.

EXTRA RESOURCES

- Bliss Zolotar's report and video here
- Aaron Jamieson's report and video (plus one more report).

If you'd like to ski this route and/or explore other Niseko areas together with a local certified guide, get in touch with Jun Horie. He's a Niseko-resident guide with seven years experience advanced level ski instructing in Austria, the spaki German as well as English and Japanese. He has also guided in New Zealand and has previously led guiding expeditions in Hokkaido before going independent. See a full list of English-speaking Hokkaido Mountain Guides Association (HMGGA) guides on the HMGGA website here.

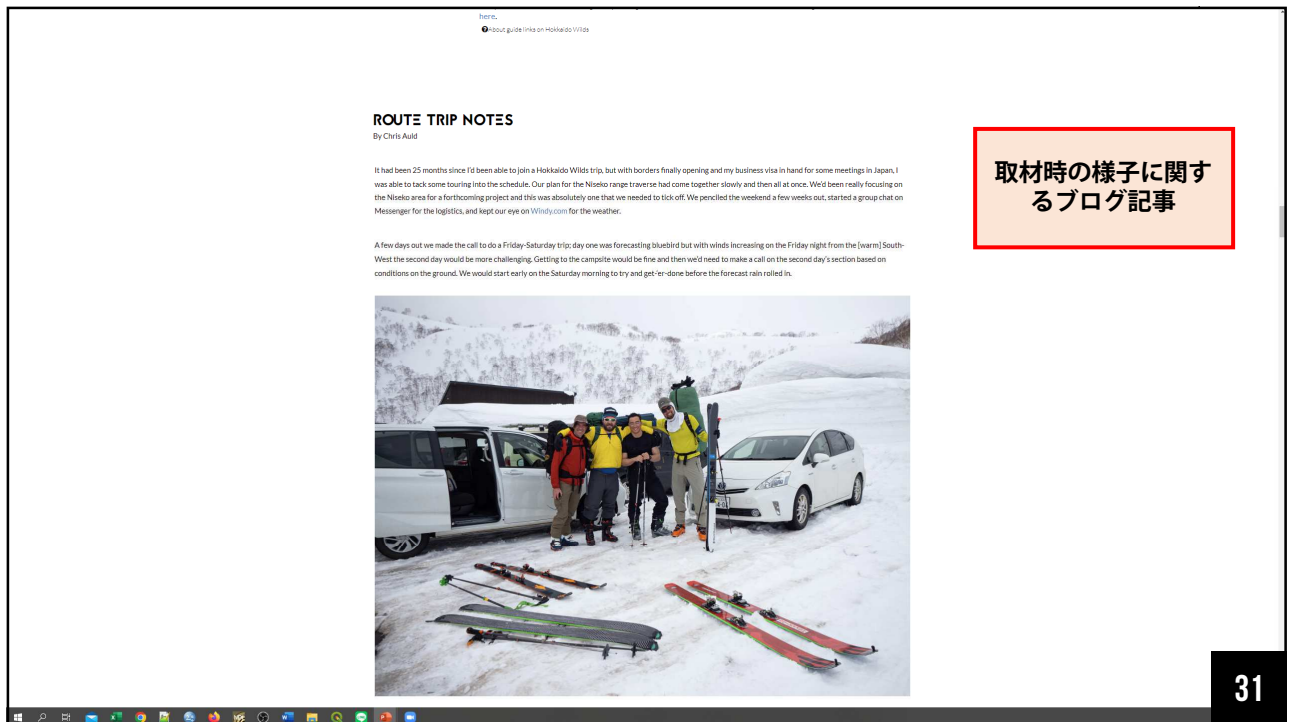
GUIDE OPTIONS

Local guide links on HokkaidoWilds

ROUTE TRIP NOTES
By Chris Auld

30

30



31



32

表

Asahi-dake to Nakadake-on-sen Loop

6hrs
790m
1460m

13km
5/10
Jun-Sep

The main season for summer hiking on Asahidake is July and August; before and after this you need to be prepared and equipped for snow on the ground and/or falling from the sky. The base for this climb is at Asahidake Onsen, a small collection of lodgings and hot springs below the ropeway up the mountain. It is a major tourist destination and can be busy with coachloads of sightseers from Japan and neighbouring countries, especially in summer and during the season for autumn colours.

ROUTE TIMING AND NOTES
Expect 2.5 hours to the Asahidake summit, then 2 hours back. The route is well defined, but if descending directly from the summit back to the ropeway in mist be careful not to lose the path. If continuing on to Nakadake onsen (中岳温泉) the trail junctions are marked by large signposts (in Japanese). From the summit take the trail east heading to Vammyadake (頂岳). 2185m, about 1 hour down past the Utsunishirai designated camping area (no facilities). Early in the season this descent will be over a large snowfield. From Mammyadake head north to the Nakadake Junction (中岳分岐, 30m). Here drop off the ridge to the west down to Nakadake onsen (40m) and Susadaira (麓分岐, 100m). Then take the marked trail south down the ropeway to Asahidake Onsen.

LOCATION
Asahidake is located in the Daisetsuzan mountain range in central Hokkaido. This hike starts and finishes at 1600m from the upper ropeway station at Sugatani on the western flank of the mountain above Asahidake Onsen spa.

GENERAL NOTES
ONLINE ROUTE GUIDE
Please take the full route guide and map with you. See: <http://asahi-dake.com>

DAISETZUZAN GRADE SYSTEM
GRADE 1 - Trail is lush beautiful nature - Short distance, little or no snow, easy to walk. A good introduction to the mountain. A good place to start for those who are new to hiking. The trail is well marked and the scenery is beautiful. A good place to start for those who are new to hiking. The trail is well marked and the scenery is beautiful.

GRADE 2 - Trail is very challenging terrain - A short distance, little or no snow, easy to walk. A good introduction to the mountain. A good place to start for those who are new to hiking. The trail is well marked and the scenery is beautiful. A good place to start for those who are new to hiking. The trail is well marked and the scenery is beautiful.

印刷可能英語表記地形図を無償提供

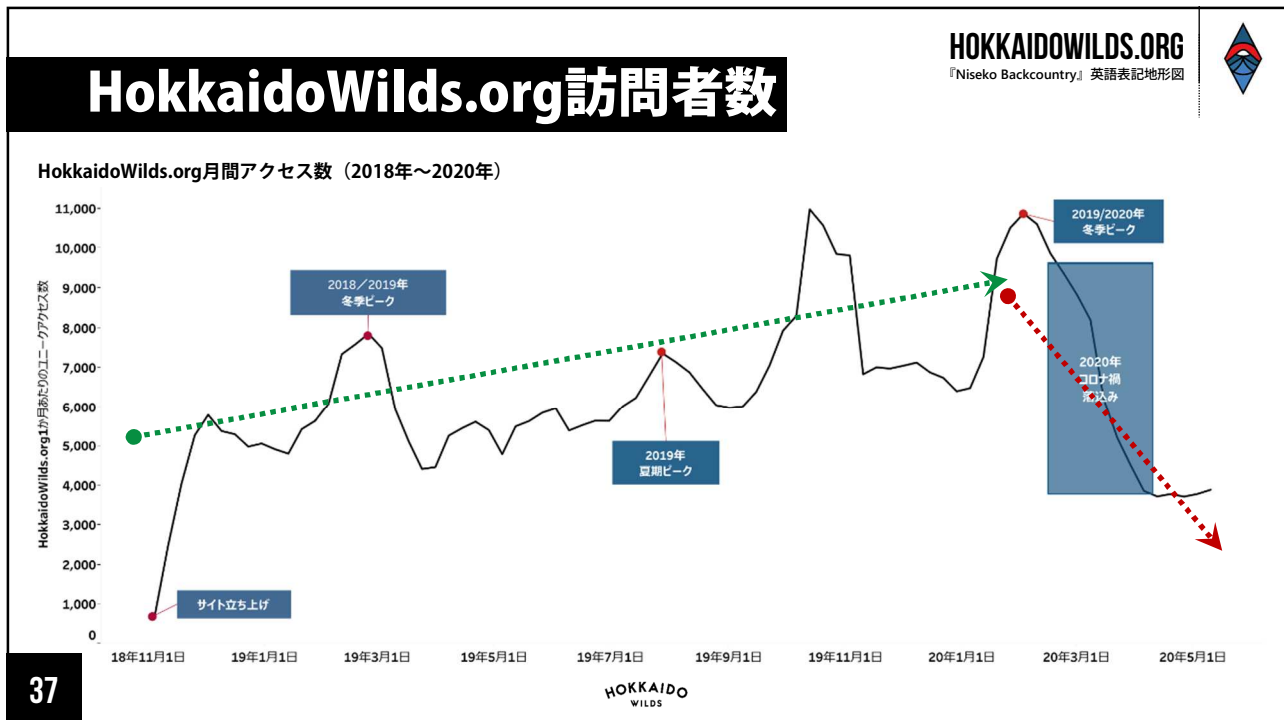




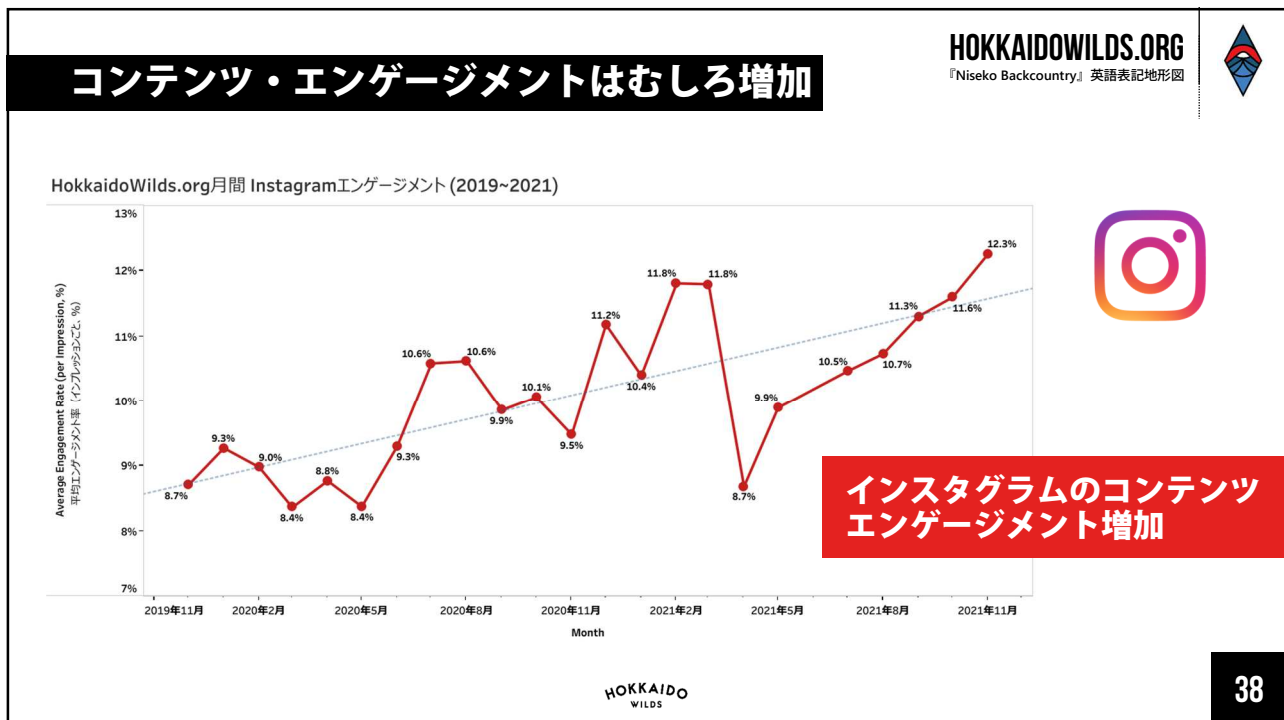
35



36



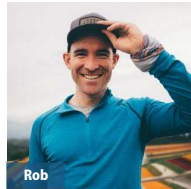
37



38

HokkaidoWilds.orgのチーム

HOKKAIDOWILDS.ORG
『Niseko Backcountry』英語表記地形図



Rob



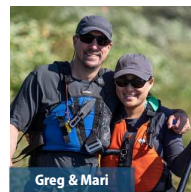
Haidee



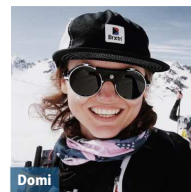
Rick



Chris



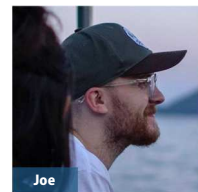
Greg & Mari



Dami



Danielle



Joe

HOKKAIDO
WILDS

39

39



- 任意団体「HokkaidoWilds.org」 ボランティア団体として活動中
- 英語話者を対象に、日本のアドベンチャー・フロンティアである北海道のアウトドア情報を英語で無償発信し、情報を十分揃った上で外国人に北海道の素晴らしい大自然を楽しんでもらう
- 300本以上のルートを公開（スキー登山、夏登山、自転車ツーリング、カヌー）
 - 取材はすべて私たちが現地に行ってやっている（98%私費）
- 非営利ウェブサイト（100%の収益を道内山岳ボランティア団体に寄付方針）
- 本業ではない（週末や年休などを利用して取材活動中）
- 情報転載はOK!（営利目的でも）

<https://hokkaidowilds.org>

イラスト by @welldonegan

40

40

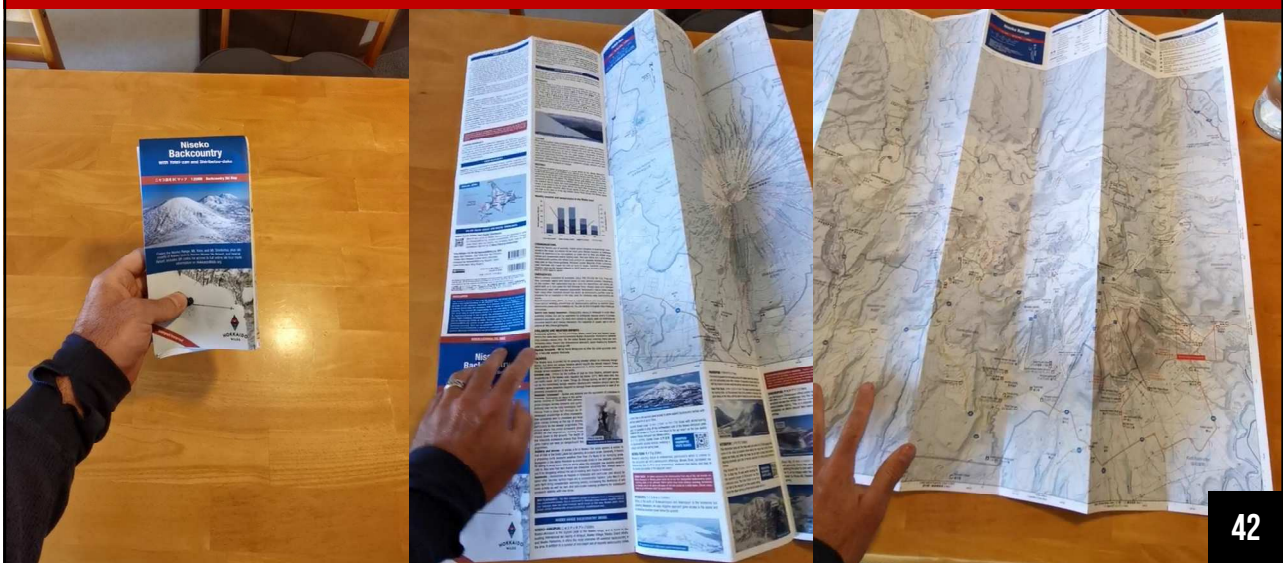


ニセコBC英語表記地形図作成 プロジェクトについて

41

41

『Niseko Backcountry』 ニセコ周辺のスキー登山用の本格的な地形図



42

42

地図の出版目的

HOKKAIDOWILDS.ORG
『Niseko Backcountry』英語表記地形図



外国人スキー登山者に
マナーを守った上で
ニセコ周辺の素晴らしいパウダースノーを
安全に満喫してもらうこと

43

43

地図の出版目的

HOKKAIDOWILDS.ORG
『Niseko Backcountry』英語表記地形図



外国人は、
マナーや安全に関する情報、
読んでくれない！

ウィンウィンがないと無駄

44

44

紙地図??

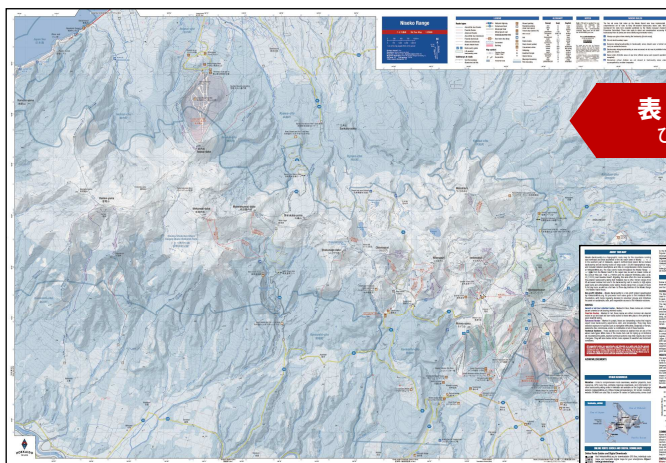
HOKKAIDOWILDS.ORG
『Niseko Backcountry』英語表記地形図



依然として紙地図は山行の計画、コミュニケーション、広域なメンタルマップなどに
不可欠

45

45



表：ニセコ連峰
ひらふ〜雷電山

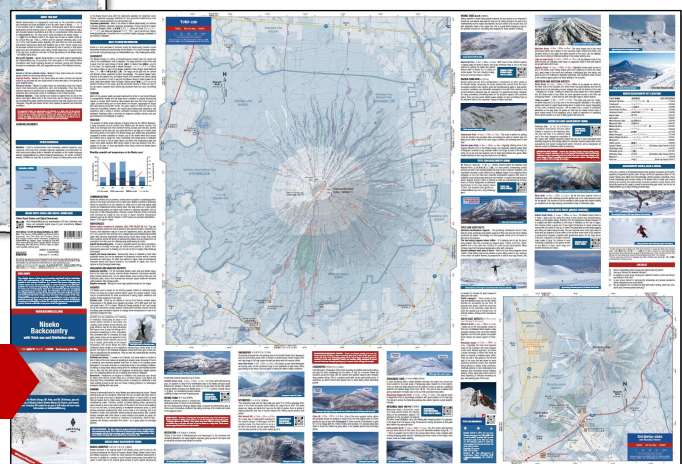
HOKKAIDOWILDS.ORG
『Niseko Backcountry』英語表記地形図



2000円（税込み）
で販売する予定

縮尺 1 : 25000

裏：羊蹄山、尻別岳、詳細情報
気象、危険、緊急時対応、マナー、フィールド説明



46

46

収益は？

HOKKAIDOWILDS.ORG
『Niseko Backcountry』英語表記地形図



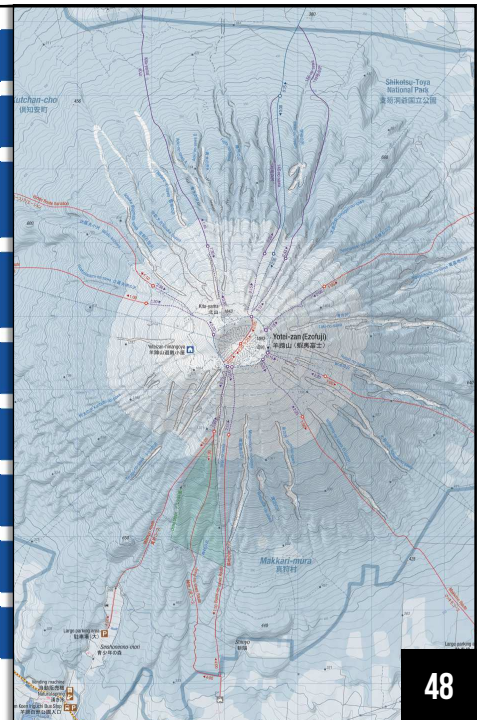
非営利の取組＝収益を道内山岳ボランティア団体（登山道整備、山小屋管理など）に寄付する方針

47

47

2021年5月	作成に着手
2021年10月	地図面の初稿ができあがり
2021年 冬シーズン	ルートの現地調査
2022年 夏シーズン	地図面の微調整、詳細情報の作成
2022年6月	印刷業者を決定
2022年7月	HokkaidoWilds.orgを出版者として登録（ISBN取得）
2022年8月	ニセコ在住のガイド／関係者とのヒアリング
2022年10月	微調整して、印刷（3000部の予定）
2022年11月上旬	販売開始（ニセコ周辺やオンライン）

HOKKAIDO
WILDS



48

48

執筆／作成

HOKKAIDOWILDS.ORG
『Niseko Backcountry』英語表記地形図



国籍：ニュージーランド

ロバート・トムソン

Robert Thomson
北星学園大学文学部准教授
地図面作成、情報作成

自力で世界一周、HokkaidoWilds.org編集長、札幌在住



国籍：ニュージーランド

クリス・オールド

Chris Auld
マイクロソフト社
情報作成
カナダスキーガイド資格、雪崩技術者、
HokkaidoWilds.orgライター、蘭越町に別荘を所持

HOKKAIDO
WILDS

49

49

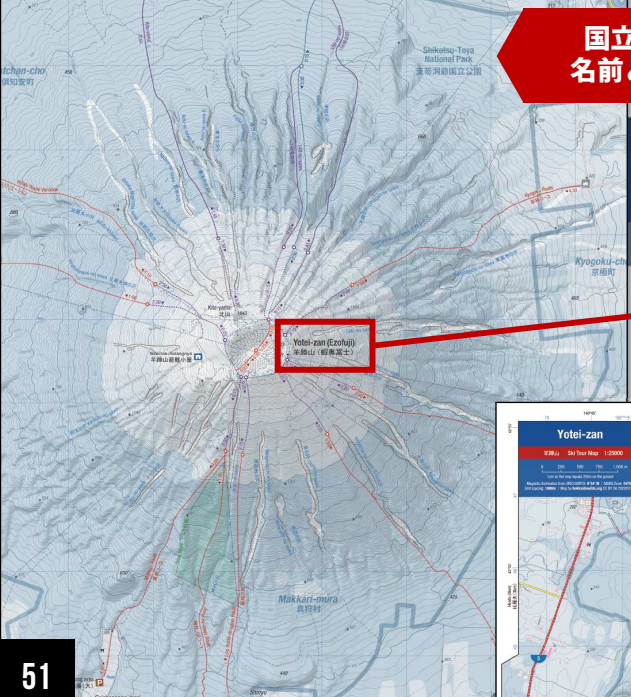
HOKKAIDOWILDS.ORG
『Niseko Backcountry』英語表記地形図



『Niseko Backcountry』の掲載内容

50

50



HOKKAIDOWILDS.ORG
『Niseko Backcountry』英語表記地形図

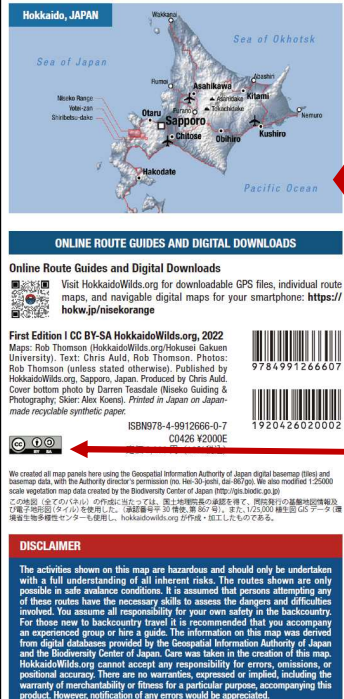
**国立／国定公園の
名前と境界線を明記**

**地形図データは国土地理院の
基盤地図データ**
トムソンが色などを独自にデザイン

英語／日本語明記
外国人⇔日本人コミュニケーションを！

**主要なグリッド線は
1kmのUTMグリッド**
日本国内では自衛隊以外
は広く普及されていない
が、海外では、地形図に
当之无愧に掲載

51



HOKKAIDOWILDS.ORG
『Niseko Backcountry』英語表記地形図

表紙の裏面

ニセコエリアの場所 ニセコエリアは北海道のどこにあるかを掲載

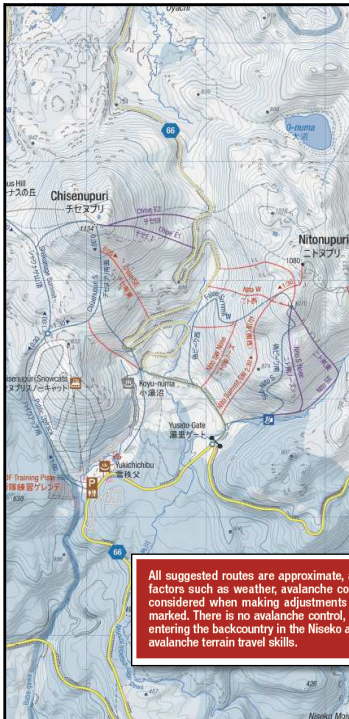
オンラインルートガイド HokkaidoWilds.orgにてすべての掲載ルートの詳しい説明を完備する予定

ISBN／日本書籍コード

著作権 クリエイティブ・コモンズ・表示—継承
営利目的でも、複製はOK

地図の利用条件 冬山の基本知識（雪崩の危険管理スキルなど）を持って
いることが利用の前提で、知識がない場合はガイド
あるいは経験のあるパーティーと同行すること

52



HOKKAIDOWILDS.ORG
 『Niseko Backcountry』英語表記地形図

70本以上のルート

ルート表記について

4段階

— ... 登り／ツーリング向け（青）

— ... 下り／フリーライド向け（赤）

— ... 上級者向け（紫）

※ 点線は、雪面の条件が厳しい傾向が強い箇所を表す（アイゼン、ピッケルが必要な場合もある）

外国人を含むニセコローカルでないスキーヤーが「マナー違反」してしまうことがしばしばあるため

雪崩の危険性が読み取れるスキルと経験、悪天候時の危険管理、ルートファインディングのスキルなどが特に求められるルート

All suggested routes are approximate, and intended as a guide only. On the ground, factors such as weather, avalanche conditions, and micro-terrain features must be considered when making adjustments during route finding. None of the routes are marked. There is no avalanche control, nor are backcountry areas patrolled. All those entering the backcountry in the Niseko area should be trained in avalanche rescue and avalanche terrain travel skills.

掲載ルートは一例に過ぎず、現地では天候、詳細な地形、雪崩状況などを考慮した微調整が必要。ルート標識がない、雪崩管理はされていない、パトロールがない、バックカントリー安全知識が必須

53

53

NEED TO KNOW INFORMATION

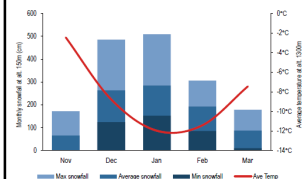
Below is a brief overview of pertinent points the backcountry traveller should know when entering the backcountry around Niseko. For a more thorough review, see the Ski Touring Safety page on HokkaidoWilds.org: <http://hokkai.jp/ski-safety>

GEOGRAPHY
The Niseko Range is a string of stratovolcanoes located near the Japan Sea coast in the southwestern end of Hokkaido. The range stretches 25km from east to west, from the resort village of Hirafu 比羅夫 to Raiden Pass 雷電峠, and on to the coast. The highest peak is Niseko Annupuri ニセコアンヌプリ (1506m). The range makes up part of the Niseko-Shakotan-Otaru-Kaigan Quasi-National Park ニセコ樺太小樽海岸国立公園. The range can be split into the Eastern and Western Peaks, separated by Nimi Pass 新見峠. The popular Niseko resort area lies at the eastern end, and Niseko Resort at the western end. Where skiing terrain is concerned, it's fair to say that the Niseko Range is better known for its deep, daily-reset powder than its steep. Raiden-yama 雷電山 (1211m) at the western terminus of the range, and the prominent volcano of Yotei-san east of the ski resorts, however, have definite big mountain vibes and more committing terrain.

TERRAIN
Much of the popular, easily accessed backcountry terrain in and around Niseko is comparatively mellow and low angle when compared to popular backcountry regions in Europe, North America, New Zealand and even the other regions of Japan. Excellent skiing can be found within the volcanic topography on slopes with well spaced old-growth forest. The upper slopes of Yotei-san can be icy, steep and committing, however, and require good backcountry experience, and experience with a range of surface conditions including rime and bulletproof windpack. Shiribetsu-dake is notorious for avalanche activity; extreme care and good assessment of snowpack is required.

WEATHER
The weather in winter around Niseko is largely driven by the 'Winter Monsoon', a fairly consistent cold air outflow from Siberia over the winter months. This tends to be strongest and most consistent during January and February. Jan/Feb temperatures can be very cold, and snow falls five or six days out of seven, often with strong winds in the alpine. The Niseko Range gets slightly less precipitation compared to winter conditions in Honshu due to the shorter wind fetch across the northern Sea of Japan, but more consistently cold temperatures in Hokkaido means it all tends to fall as snow. March and April offer lengthening days and much more stable weather. With longer spells of blue sky weather, long 9hr+ daytrips or the two- to three-day Niseko Haute Route across the Niseko alpine become more feasible.

Monthly snowfall and temperatures in the Niseko area¹



HOKKAIDOWILDS.ORG
 『Niseko Backcountry』英語表記地形図

裏面のテキスト①

ニセコ連峰の地理

欧米の山岳地帯よりも急斜面が少ないが、羊蹄山上部はアイスバーンになること、尻別岳は雪崩が起きやすいことを掲載

地形

ニセコ周辺はシベリアからの気流により気温が低く、積雪量が世界的に見ても極めて多く、1～2月は森林限界を超えたスキー登山は困難

気候

降雪量と気温の平均

54

54

COMMUNICATIONS

Above the treeline and at summits, mobile phone reception is surprisingly widespread in the range, but should not be relied upon. Mobile reception at trailheads should be assumed to be non-existent, so make sure to have any digital maps cached and downloaded before leaving town. Two-way radios are a good option for backcountry parties, but radios must conform to Japanese standards. See our deep-dive at <http://hokaw.jp/radios>. Personal Locator Beacons (PLBs) commonly used overseas are illegal for use on land in Japan. Satellite messengers, however, such as the Garmin InReach or SPOT device are excellent alternatives – they're 100% legal in Japan.

EMERGENCIES

Where mobile reception is available, CALL THE POLICE ON 110. They will then coordinate search and rescue based on your general location. Depending on location, first responders may be a local fire department, police, ski patrol staff, or in rare cases the Self-Defense Force. Always leave your intended backcountry plans with someone responsible. Backcountry rescue takes longer than many other locations around the world, so backcountry parties must be prepared for an overnight in the hills, even for relatively easy backcountry ski routes.

Submit backcountry plans

Search and rescue insurance

HAZARDS

The Niseko area is known for its amazing powder settled on relatively benign terrain, but there are unique hazards which require the utmost respect. These may be counterintuitive for those accustomed to skiing higher elevations and deeper terrain elsewhere in the world.

Extreme cold

Hokkaido "crevasses"

Small gila creek on Shirobetsu-dake

Visibility and storms

裏面のテキスト②

山行中の通信機器

緊急時

天気

危険

HOKKAIDOWILDS.ORG

『Niseko Backcountry』英語表記地図図

携帯電話の電波は信頼できなく、無線の使用は合法の機器のみで、サテライトメッセンジャーは有用

登山届の提出、捜索のための保険、いざというときは警察に連絡

雪崩予報（日本雪崩ネットワークとニセコ雪崩情報）
天気予報（Windy.com）

ニセコ周辺特有の危険の種類：標高が海外の人気バックカントリーゾーンよりも低いものの、低温度の日、視界が悪い日が多く、氷河などのクレバスのないものの、グライドクラックがあり、沢のスノーブリッジが弱かったりし、海外と比べて雪崩が起きにくい気象条件だが、起こらないわけではない

HOKKAIDO WILDS

55

55

登山口の地図上の表記

駐車について

Route types

LEGEND

Plowed parking

Road closed (point)

Onsen (day visitors OK)

Wild onsen

Hut

Public toilets

Convenience store

Hot spring

Buddhist Temple

Shinto Shrine

Municipal boundary

Park boundary

Yusato Gate

湯里ゲート

Yukichichibu

雪秩父

除雪された駐車場

駐車場がない登山口

Large parking area

駐車場 (大)

HOKKAIDO WILDS

56

56

PARKING
Parking is extremely limited for most Niseko area backcountry ski routes. Plowed parking areas are the exception rather than the rule, so skiers will often need to park on the side of the road. In Niseko however, where 14 meters (46ft) of snow falls per season even in urban areas, roadside parking causes problems for road snowclearing crews. Therefore, outside of plowed parking areas, backcountry skiers should a) clear a few meters extra off the side of the road to avoid parking too far into the lane, b) avoid parking in snowplow turnaround areas, c) avoid parking overnight (snowclearing often occurs early in the morning) and d) be sensitive to locals' and authorities' wishes (obey all signs posted). Also, consider sharing transport with other skiers to avoid multiple cars parked per party. For skiers sleeping in their vehicles or traveling in campervans, *michi-no-eki* - roadside rest stations, most with 24hr toilets - are a good option for overnight parking.

SHIRIBETSU-DAKE PARKING - Besides the sprawling Rusutsu Resort parking areas, there's no plowed parking at any of the popular Shiribetsu-dake backcountry trailheads, so skiers commonly park on the side of the road. Technically parking on the road is illegal. Please be sensitive to locals and authorities' wishes. Overnight parking (e.g. in campers etc) disrupts snowclearing work, so is strongly discouraged.

NITONUPURI/CHISENUPURI PARKING - There's no plowed parking area near the Yusato Gate (GR: 681466), so skiers commonly either park in front of the gate or park on the side of the road. Technically parking on the road is illegal. Therefore, please be sensitive to locals and authorities' wishes, and consider skiing elsewhere if parked cars are backed up. Overnight parking (e.g. in campers etc) disrupts snowclearing work, so is strongly discouraged.

Public transport - Three routes on the map (the Makkari Route and the two Hirafu Routes) are accessible by bus from JR Kutchan train station. Given the long time required on the mountain, make sure to catch the earliest bus at 6:40am from JR Kutchan station, arriving at the mountain at 7:12am.

Parking - The Hirafu, Makkari, and Makkimo routes have large plowed car parking areas, but these are the exception. For the other routes, skiers typically park on the side of the road, which is technically illegal and can disrupt daily snowclearing work. Therefore, follow common-sense rules to help reduce pressure on parking: carpool where possible, don't park in snowplow turnaround areas, clear a few meters extra off the side of the road to avoid parking too far into the lane, and obey all signs posted.

HOKKAIDOWILDS.ORG
『Niseko Backcountry』英語表記地形図

裏面のテキスト③

駐車について

駐車全般

尻別岳西側

ニト／チセ

登山口に除雪されている駐車場があるのは例外で、多くのスキー登山者は道路わきに駐車する（厳密に言うと違法）

- ① 自らで除雪が必要
- ② 除雪車の回転場所に駐車禁止
- ③ 夜間駐車をしないこと
- ④ 看板の書かれていることを厳守すること
- ⑤ 車を乗合しよう

羊蹄山

公共交通機関の利用（バス）や、除雪された駐車帯

57

57

BACKCOUNTRY GUIDES, GEAR & RENTAL
There are a number of professional backcountry guiding companies and English-speaking independent guides (both foreign and local Japanese) based in the greater Niseko area. Most hold internationally certified guiding credentials, and they have the local knowledge to make a backcountry visit to Niseko all the more memorable (think secret stashes dialed to the day's conditions, amazing food, and authentic cultural experiences). There is also reasonably good access

ETIQUETTE
Culturally, Japan differs in many ways to many English-speaking countries. Harmony and attentiveness to the others (配慮 *hairyo*) is a strong trait taken seriously here. Socially, individual rights make way for the collective society at large in Japan. For the uninitiated, interpersonal dynamics in Japan can be bewildering. That said, on the mountain, etiquette here is as common-sense as anywhere else in the world. Ascend slopes as 'economically' as possible, leaving the slope as untracked as possible - avoid putting up tracks in runs; communicate well and respectfully with other parties (a friendly *konnichi-wa* (hello) goes a long way); leave no trace; go to the toilet before arriving at the trailhead (don't pee at trailheads or summits); respect others' right to peace - strive to keep music and drone noise to a minimum; promote a friendly and positive attitude in the backcountry. See a deeper-dive at <https://hokw.jp/manners>.

ONSEN HOT SPRINGS
Japan's unique onsen hot spring culture is as much a part of the Hokkaido backcountry experience as the amplit deep powder. A long soak in one of the many natural hot springs around Niseko at the end of a deep backcountry day is the norm for locals and visitors alike. Few of these facilities exist solely for tourists, however. To avoid offending locals, here's three iron-clad etiquette points to do onsen right. First, nothing dirty should enter the hot pools. This includes your unwashed body, towels, clothes (including swimwear), hair (tie up long hair before entering pools) and soap. Use the supplied washing stations to thoroughly wash your body before soaking in the pools. Body wash and shampoo is usually supplied. Second, onsen are venerated, verging on spiritual places to relax and unwind. Keep conversation in the baths quiet and contained. Third, no alcohol in the pools. Most onsen facilities have communal chillout rooms for post-soak hydration (some with beer on tap). If in doubt about what to do, discretely observe what others are doing or ask a local.

AINU PLACENAMES - The Ainu indigenous people of Hokkaido have a strong historical and contemporary legacy. This is evidenced in Hokkaido place names, tangible culture, and language. Here are some common words found on this map: *Nupur* peak; *chitor* house; *niseko* standing cliff; *sa-peh* (shiribetsu); mountainous river.

HOKKAIDOWILDS.ORG
『Niseko Backcountry』英語表記地形図

裏面のテキスト④

ガイドを利用しよう

マナー

温泉マナー

アイヌ語の地名

ガイドを利用する利点：その日のコンディションに合った最高の斜面選びのノウハウ、安全性、ローカルお店の知識、本当のニセコを見せる経験

日本は文化的に特有の国で、「配慮」が重視される文化だが、山の常識は海外と大して変わらない

- ・ 滑る斜面をできるだけジグを切ったり登らないこと
- ・ 他のパーティーの権利を尊重し、良いコミュニケーションしよう
- ・ 登山口や山頂に小便をしない
- ・ フレンドリーでポジティブな雰囲気を作ろう！

温泉は最高！3つの鉄則：①汚いものは湯舟に入れないこと（体を洗う、タオルを入れないなど）、②静かに入浴すること、③お酒は飲酒しないこと（休憩室で飲もう）

アイヌ語地名がアイヌ文化のレガシーを語る

58

58

29

YOTEI-ZAN BACKCOUNTRY SKIING

Mt. Yotei (i.e., Yotei-zan, 羊蹄山, 1898m), situated within the Shikotsu-Toya National Park (支笏洞爺国立公園), is a near perfect, freestanding conical volcano just east of the bustling Niseko ski resort area in southern Hokkaido. This impressive mountain is also referred to as *Makkar-nupuri* in the indigenous Ainu language, or Eto-Fuji. Yotei-zan's dramatic southeastern aspects offer some of Hokkaido's best backcountry skiing for intermediate- to expert-level backcountry skiers. Beyond around 1300m in altitude is solid ski mountaineering territory, hence all routes designated as advanced (technical) on the map beyond about 1300m. See detailed route guides on HokkaidoWilds.org here: <http://hokw.jp/yotei>

YOTEI-ZAN ROUTE GUIDES

Yotei-zan's southeastern aspects

裏面のテキスト⑤

各フィールドについて

オンラインルートガイドへのQRコード

HokkaidoWilds.orgに完備

ルート描写の写真 ルートを可視化した写真

山の紹介 それぞれの山の特有の危険や注意書き

代表的なルート 各フィールドを代表する人気のルートを掲載

CHISENUPURI チセヌプリ (1134m)

Like Nitupuri, Chisenupuri offers some superbly accessible backcountry skiing, and gets the skier satisfyingly into the alpine, if only for a moment. Views are excellent across the range, and the eastern and southern aspects offer fantastic deep powder skiing. This is a popular peak with terrain particularly prone to avalanche, so skiers should take special care to avoid skiing above ascending parties.

Chisenupuri (top right), Chisenupuri ski area at bottom left, and Chisenupuri-dake at top left

Chise SE ④hrs 1481m ⇒ 5.5km | One of the more popular routes, skiers will generally follow the snowed in Route 66 to the hard dogleg bend at 700m, gaining the spur to join with Chisenupuri S. Either summit if the weather is good for it, or be happy with the 1000m treeline and rip skins. The narrow valley back down to Route 66, flanked by gully walls, is the powder-pocket that just keeps giving.

HOKKAIDOWILDS.ORG
『Niseko Backcountry』英語表記地形図

HokkaidoWilds.orgに完備

HOKKAIDO WILDS

59

iwanoannupuri イワノアヌプリ

Nisekoannupuri ニセコアヌプリ

Moiwa-yama モイワ山

Niseko Annupuri Ski Area ニセコアヌプリ国際スキー場

Niseko Village Ski Resort ニセコビレッジスキー場

ニセコアヌプリ周辺のリフトアクセスBC

BCゾーンを表示 遭難時やスキーヤー間のコミュニケーションを促進するために、ゲートからアクセスできる斜面の「通称」を明記

バックカントリーゲートを表示

立入禁止区域を明記

※ 当地形図はスキー登山用であるため、スキー登坂装備なしでスキー場に戻るルートを表記しないことにした

60

NISEKO RULES

The five ski areas that make up the Niseko Resort area have implemented a comprehensive set of rules, reproduced below, to keep lift-assisted backcountry skiers safe. These rules apply to skiers and snowboarders accessing the backcountry from ski areas (see www.niseko.ne.jp/en/niseko-rules/). Backcountry zones outside ski areas, including but not exclusive to those marked in green, are definitely avalanche terrain, have no avalanche control, and are are unpatrolled.

- 1 Always use gates when entering the backcountry [via ski areas].
- 2 Do not duck boundary ropes.
- 3 Everyone skiing/snowboarding in backcountry areas should wear a helmet and carry an avalanche beacon.
- 4 Backcountry skiing/snowboarding in areas accessed via ski areas is prohibited when gates are closed.
- 5 Never enter off limits areas at any time (official rescue and research operations excepted).
- 6 Elementary school children are not allowed in backcountry areas unless accompanied by an elder companion.

ニセコルール

HOKKAIDOWILDS.ORG
『Niseko Backcountry』英語表記地形図

裏面にも 言及

NISEKO RULES - All skiers accessing the backcountry from any of the ski resorts on Niseko Annupuri or Moiwya-yama must do so via the designated backcountry gates - ducking ropes is not allowed. These gates may close without warning. Decisions on whether any or all gates will open or not are made on a daily basis. Check www.niseko.ne.jp/en/niseko-rules/ for more details.

地図の裏面のテキスト内にもニセコルールについて言及。スキー場からバックカントリーをアクセスする時、ゲートからが鉄則。ゲートの開閉はその日々に決められる。

HOKKAIDO
WILDS

61

61

尻別岳について

表示ルート全てが「紫色」

上級者向けのアドバンスド

種苗管理センターを横断しないことを明記

特別な注意書き

表記の情報

- 標高が比較的に低いが、雪崩が極めて起きやすい地形
- ニセコ周辺では最も危険な山だと言える
- 特別な雪崩危険管理知識が求められるフィールド

SHIRIBETSU-DAKE BACKCOUNTRY SKIING

Shiribetsu-dake 尻別岳 (1107m) is a somewhat diminutive volcano when viewed in relation to the towering Yoteizan just next door. It is, however, easily one of the most dangerous mountains in the region, with multiple avalanche paths that live up to their moniker with disturbing frequency. Accordingly, skiing the mountain requires impeccable terrain assessment and hazard management skills. Therefore, we've designated all descent routes on Shiribetsu-dake as advanced.

SHIRIBETSU-DAKE ONLINE ROUTE GUIDES

62

31

羊蹄山について

1300m以降は点線

アイゼン／ピッケルの世界

特別な注意書き

表記の情報

- ・ 南東の方位がメイン
- ・ 1400m以下の雪質がベスト
(上部はアイスバーになることが多い)
- ・ 御鉢を滑る場合は最低8時間の山行を計画する必要がある
- ・ 駐車や公共交通機関の利用に関する注意点 (スライド51に参照)

YOTEI-ZAN QUICK FACTS

Sheltered southeastern aspects – The prevailing northwest storms mean that the south, southeast, and eastern aspects of Yotei-zan have the more reliable conditions all season. Accordingly, the most popular routes are to be found on this side of the volcano.

The best skiing happens below 1400m – It's relatively rare to get the good, deep powder Yotei-zan is known for beyond about 1300m. From the 1300m powder line to the crater rim (1890m), it's often icy and hard-packed. Many climbers may find themselves bootpacking, often with crampons.

Summit attempts need about 8 hours – While the best skiing happens below 1400m, crater skiing may be the pinnacle of your skiing career. If you must get to the crater rim and/or summit, be prepared for a solid 8-hour day (return). Add on another 30 minutes for good measure if skiing into the crater.

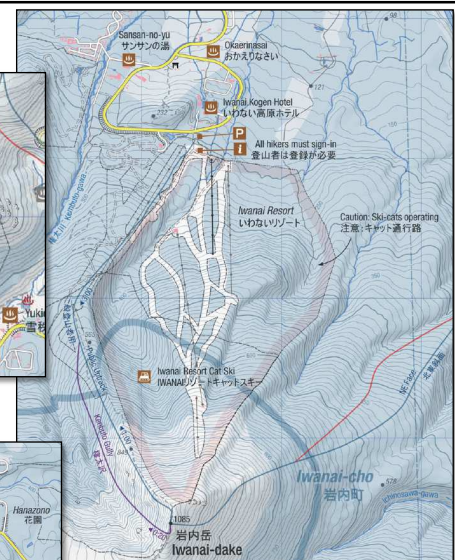
63

63

キャットスキーについて

掲載内容

- ・ いわないリゾート
 - ・ ハイクアップ用ルートを明記
 - ・ 登山者の事前登録
- ・ チセヌプリ
 - ・ ハイクアップ用ルートを明記
 - ・ 自衛隊ピストも明記
- ・ ワイス



64

HOKKAIDO
WILDS

64

その他①

HOKKAIDOWILDS.ORG
『Niseko Backcountry』英語表記地形図

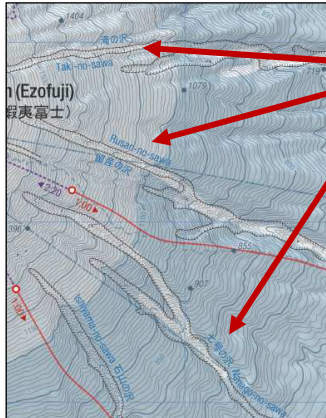


CHECKLIST

- ☐ Does a responsible person know your backcountry trip plans?
- ☐ Have you checked the weather forecast?
- ☐ Is everyone in your group carrying an avalanche beacon, probe and shovel, and trained in their use?
- ☐ Is your group trained in backcountry knowledge and posses avalanche terrain assessment and travel skills?
- ☐ Are you prepared for emergencies with extra warm clothes, extra food, first-aid kit and communications device(s)?

BCチェックリスト

- ・ 登山計画をだれかに渡したいるか
- ・ 天気予報を確認したか
- ・ 全員がビーコン、プローブ、ショベルを持っていて、その使い方を学んでいるか
- ・ BC知識、雪崩知識、雪崩地形への行動に関する知識を学んでいるか
- ・ 緊急時に備えて余分に暖かい服装、食料、救急箱、通信機器を携帯しているか



羊蹄山の沢名

- ・ 遭難時やスキーヤー間のコミュニケーションを促進するために、羊蹄山の主要な沢名を明記
- ・ 出典：早川禎治（1996）『後方羊蹄山登攀記』、北の野帳社

HOKKAIDO
WILDS

65

65

その他②

HOKKAIDOWILDS.ORG
『Niseko Backcountry』英語表記地形図



通行止めゲート

- ・ 道路が冬季通行止めとなっている場所を明記
- ・ おおよその期間を明記
- ・ 道路わき駐車アイコンも
 - ・ 自らで除雪が必要だと明記



英語／日本語の単語

- ・ 山を通じて日本語を学ぶ機会を
- ・ 外国人と日本人との間のコミュニケーションを促進

GLOSSARY

Romaji	Kanji	English
cho	町	town
dake	岳	peak
eki	駅	station
goya/koya	小屋	hut
hinangoya	避難小屋	shelter
ike	池	pond
kawa/gawa	川	river
kako	火口	crater
keikoku	溪谷	gorge
ko/mizumi	湖	lake
numa	沼	pond
nadare	雪崩	avalanche
onsen	温泉	hot spring
sawa	沢	stream
seppi	雪庇	cornice
taira/daira	平	plateau
tani/dani	谷	valley
taki	滝	waterfall
toge	峠	pass
yama/san/zan	山	mountain

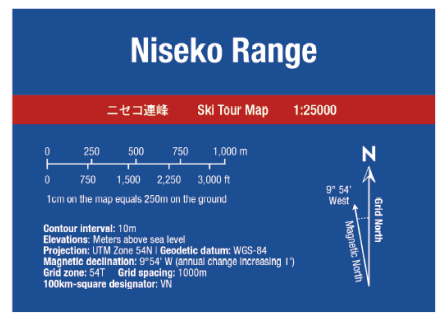
HOKKAIDO
WILDS

66

66

その他③

HOKKAIDOWILDS.ORG
『Niseko Backcountry』英語表記地形図



地図面に関する技術的な情報

- ・ 投影法
- ・ スケールバーはメートル法とフィート法
- ・ 等高線の幅 (10m)
- ・ 磁器偏角
- ・ グリッドの区画 (1000m)
- ・ UTMの広域コード

詳し凡例

LEGEND			
Route types			
	Ascent/Ski-tour Routes		National Highway
	Freeride Routes		Prefectural Road
	Advanced Routes		Municipal Road
	Ascent/Ski-tour (technical)		Minor/gravel road
	Freeride (technical)		Walkway/summer trail
	Advanced (technical)		Bus route (bus stop)
	Niseko Haute Route		Snowshed
	Backcountry gates		Building
	Lift-assisted backcountry zone		Contour lines (100m, 10m)
Cableways & roads			
	Ski lifts/gondolas		Rocks/cliffs
	Abandoned ski lifts		Trees/no trees
	Plowed parking		Public toilets
	Roadside parking (clear own space)		Road closed (winter)
	Onsen (day visitors OK)		Convenience store
	Wild onsen		Hotspring
	Hut		Buddhist Temple
	Public toilets		Shinto Shrine
	Municipal boundary		Park boundary

67

67



ご清聴をありがとうございます！

<https://hokkaidowilds.org>

イラスト by @welldonegan

68

68



意見交換会

(なんでもOKです・・・既にHokkaidoWilds.orgチーム内でも
掲載内容で色々ともめています)

69

69

異論：秘密をばらしている



- ニセコ周辺のBCルートに関するすべての情報が既にネットに出回っている
と思った方がいい時代になっている
 - FATMAP, Strava, Yamareco, Yamap
 - ルートのみで、安全性、駐車マナー、気候などの「付随する情報」
なしで！
- **どれだけ多くの人に安全性やマナーを伝えられるかが
勝負だという時代だと考えている**
- 『Niseko Backcountry』はそれに効果的だと考えている
 - 実際に読みたい、購入したい物であるから

70

70

異論：ガイド業に悪影響をする

HOKKAIDOWILDS.ORG
『Niseko Backcountry』英語表記地形図



- ・ニセコ周辺のBCルートに関するすべての情報が既にネットに出回っていると思った方がいい時代になっている
 - ・情報が出回っていないから営業できるという時代が既に去ってしまった
- ・ガイドを利用する価値をどれだけ多くの人に伝えられるかが勝負だという時代だ
- ・『Niseko Backcountry』はそれに効果的だと考えている
 - ・付加価値としてのガイド業のアピール

HOKKAIDO
WILDS

71

71

異論：駐車がすでに飽和状態

HOKKAIDOWILDS.ORG
『Niseko Backcountry』英語表記地形図



- ・パーミット制など、対策が絶対に必要だと考えている
- ・登山口における駐車の問題を解決するまで英語表記地図を出版しないという手もあるが、それが何年先の話でしょうか。
- ・「スキーヤーへの有効な教育」＋「設備整備」は同時並行が必要

2022 2023 2024 2025 2026 2027 2028 2029 2030 2031 2032 2033 2034 2035 2036

10年間待つ

ちゃんとした地図なし

登山口、マナー、無法のまま増加一方

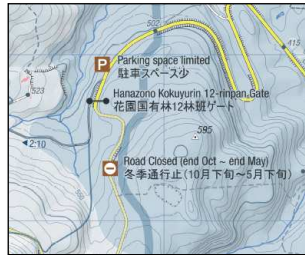
HOKKAIDO
WILDS

72

72

道路わき駐車アイコン（取り止め）

HOKKAIDOWILDS.ORG
『Niseko Backcountry』英語表記地形図



除雪のある駐車場



道路わき駐車アイコンという選択肢



73

HOKKAIDO
WILDS

73

73

『Niseko Backcountry』 英語表記スキー登山地形図の説明会

場所：2階 倶知安町公民館 小会議室

日時：2022年9月13日（火）18時～20時

HOKKAIDO
WILDS

74