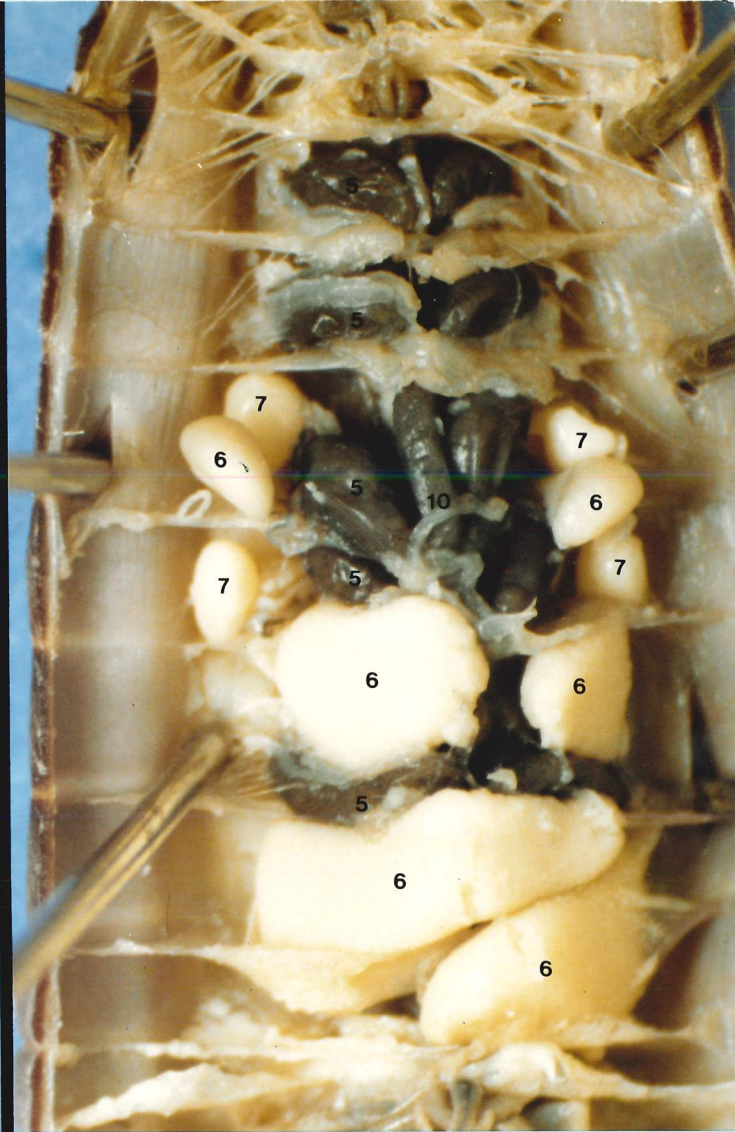
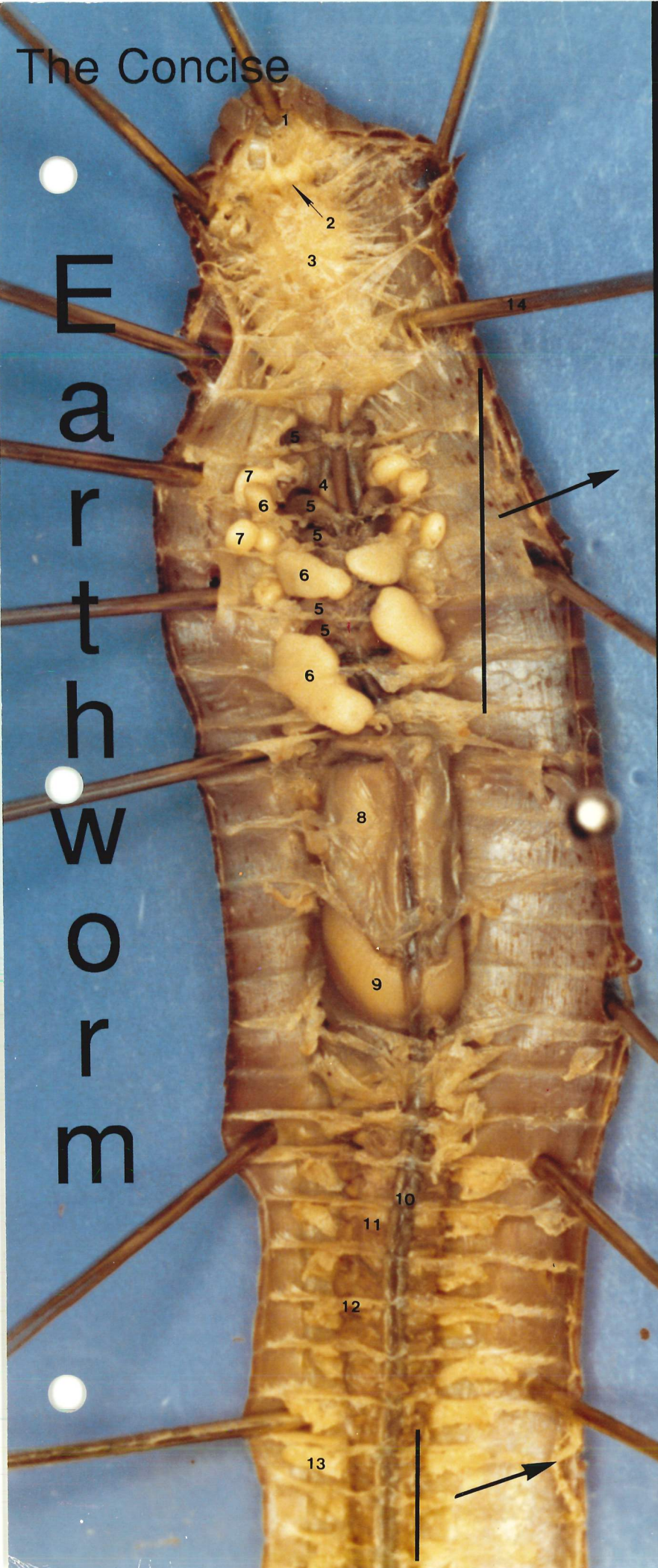
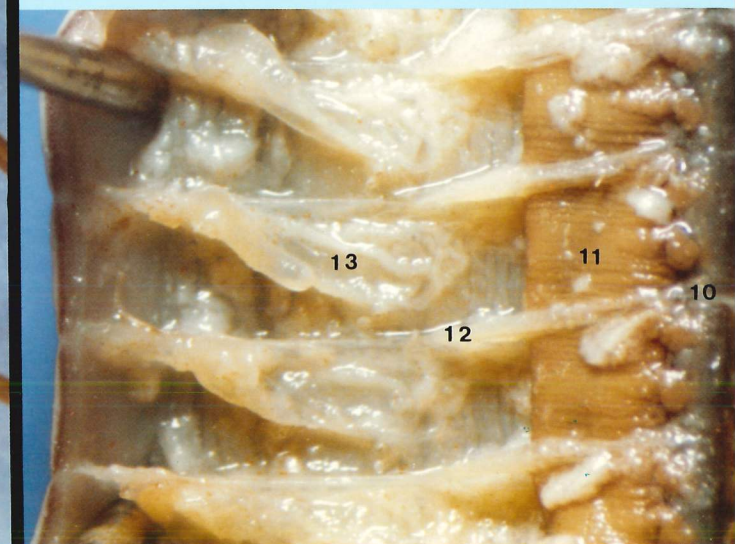


# The Concise

# E a r t h w o r m



- |                              |                         |
|------------------------------|-------------------------|
| 1. mouth                     | 8. crop                 |
| 2. cerebral ganglion (brain) | 9. gizzard              |
| 3. pharynx                   | 10. dorsal blood vessel |
| 4. esophagus                 | 11. intestine           |
| 5. hearts                    | 12. septum              |
| 6. seminal vesicles          | 13. nephridium          |
| 7. seminal receptacles       | 14. dissection pin      |

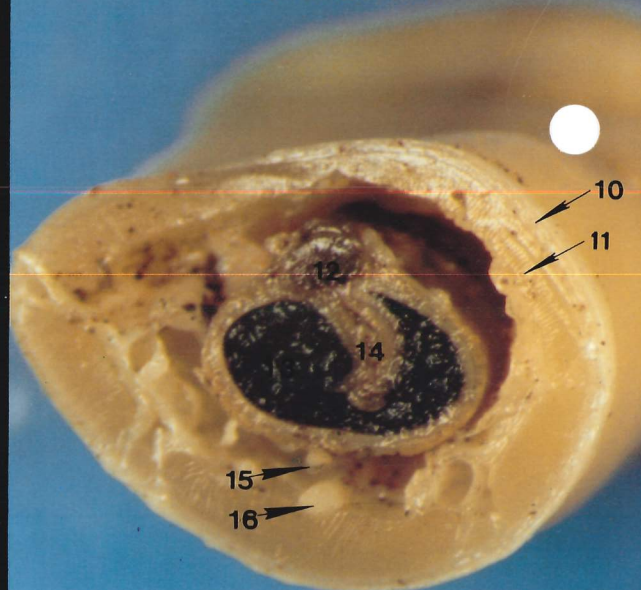




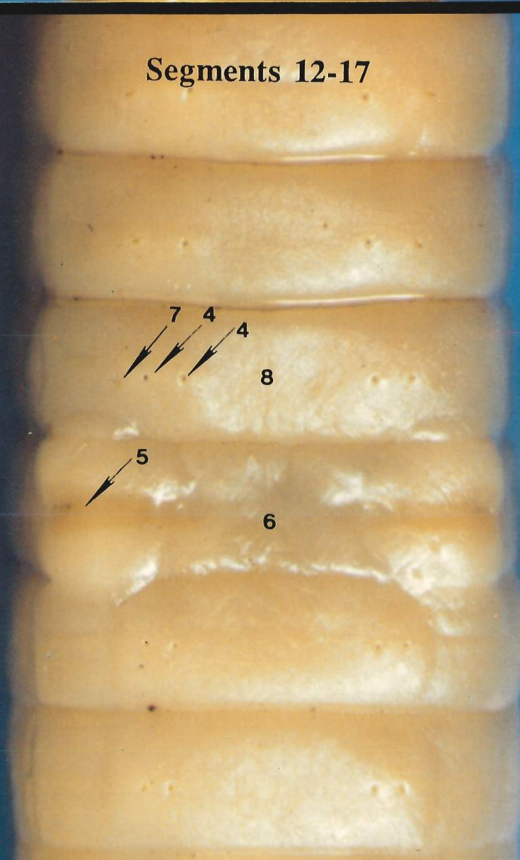
Anterior



Cross Section



Segments 12-17



- |                       |                          |
|-----------------------|--------------------------|
| 1. clitellum          | 10. circular muscles     |
| 2. prostomium         | 11. longitudinal muscles |
| 3. mouth              | 12. dorsal blood vessel  |
| 4. setae              | 13. intestine            |
| 5. pore of sperm duct | 14. typhlosole           |
| 6. 15th segment       | 15. subintestinal vessel |
| 7. pore of oviduct    | 16. ventral nerve        |
| 8. 14th segment       |                          |
| 9. anus               |                          |

### BioCam Communications

2318 Second Ave. Box 417 Sta. A.  
Seattle Kelowna, B.C.  
WA 98121 Canada V1Y 7N8

Setae Enlarged



Posterior

