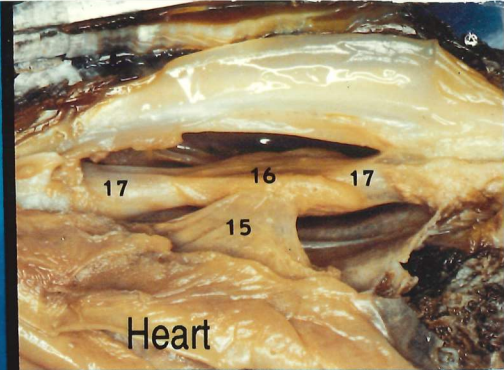
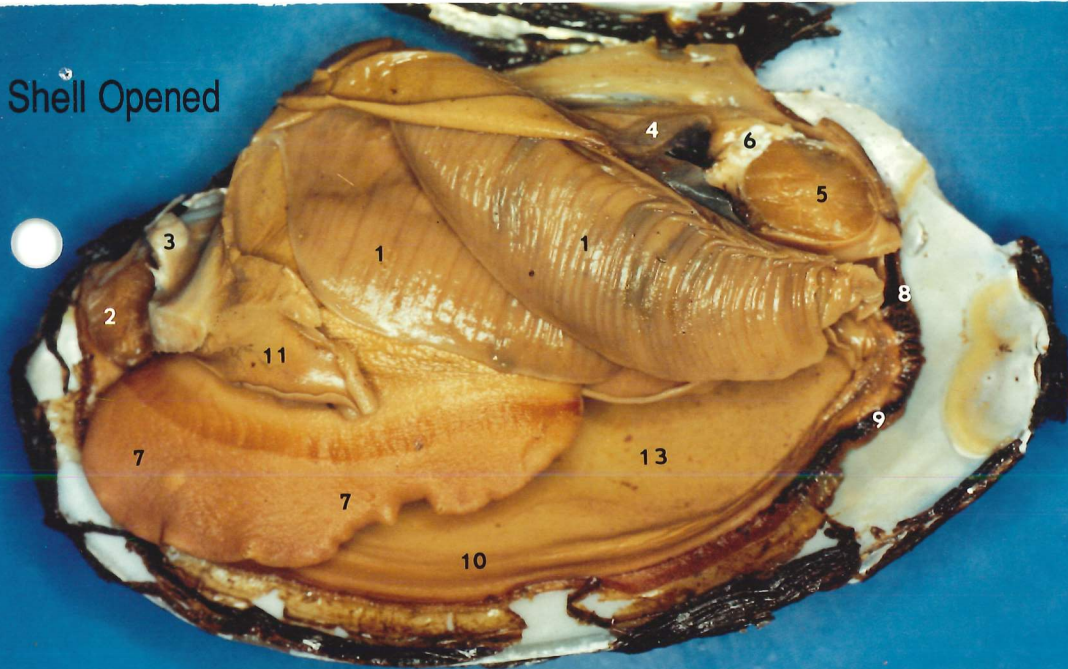


Shell Opened

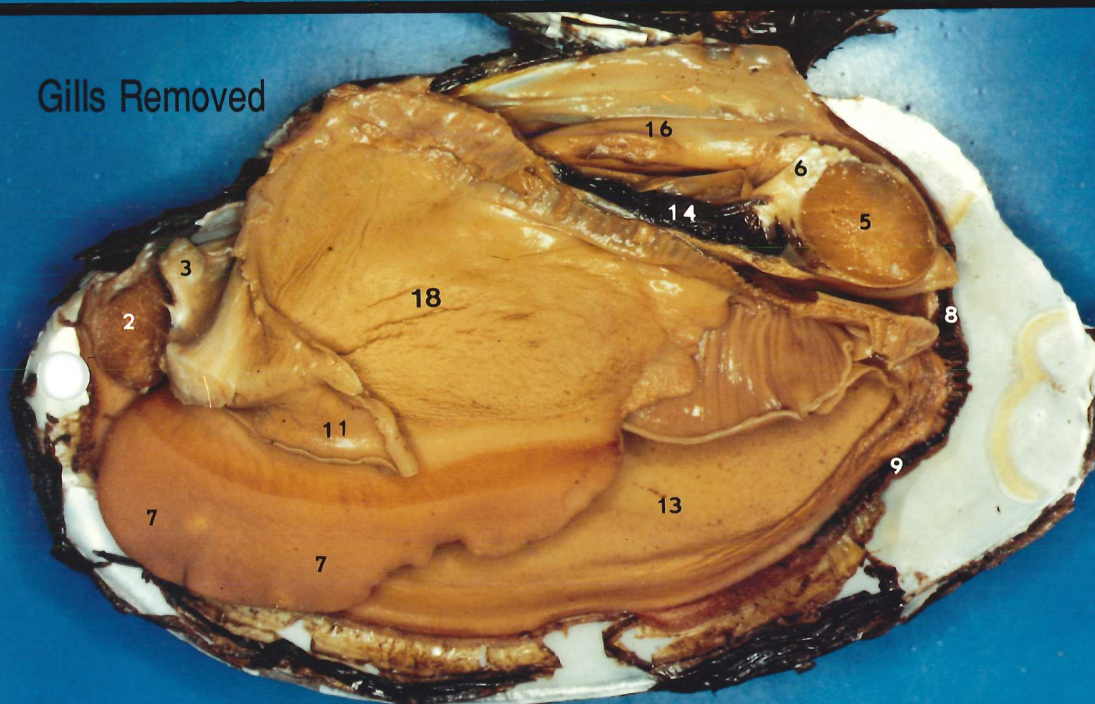


Heart

The Concise Clam

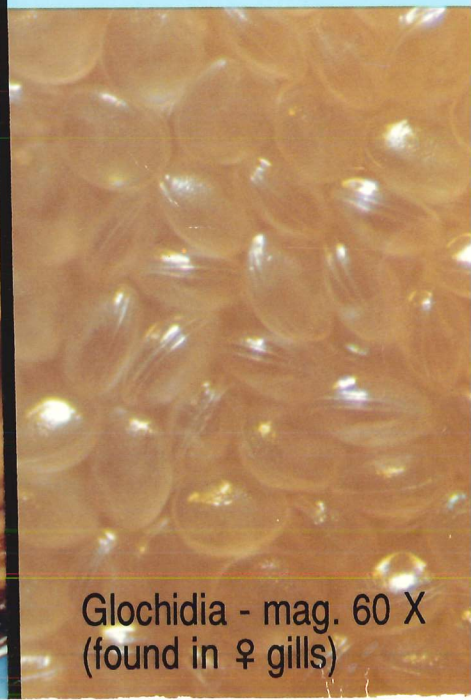
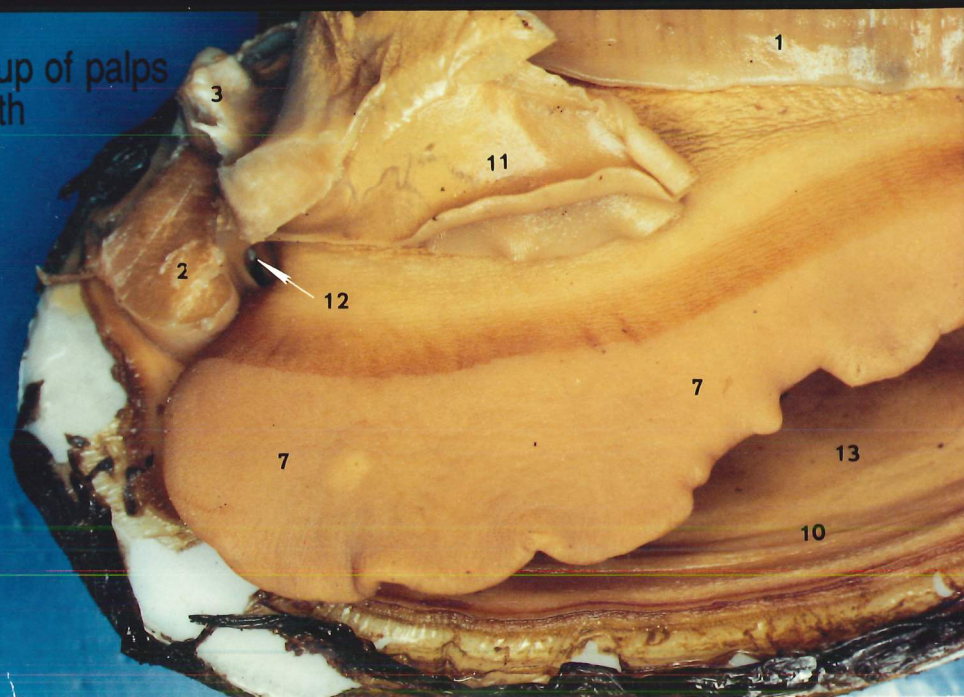
(freshwater mussel)

Gills Removed



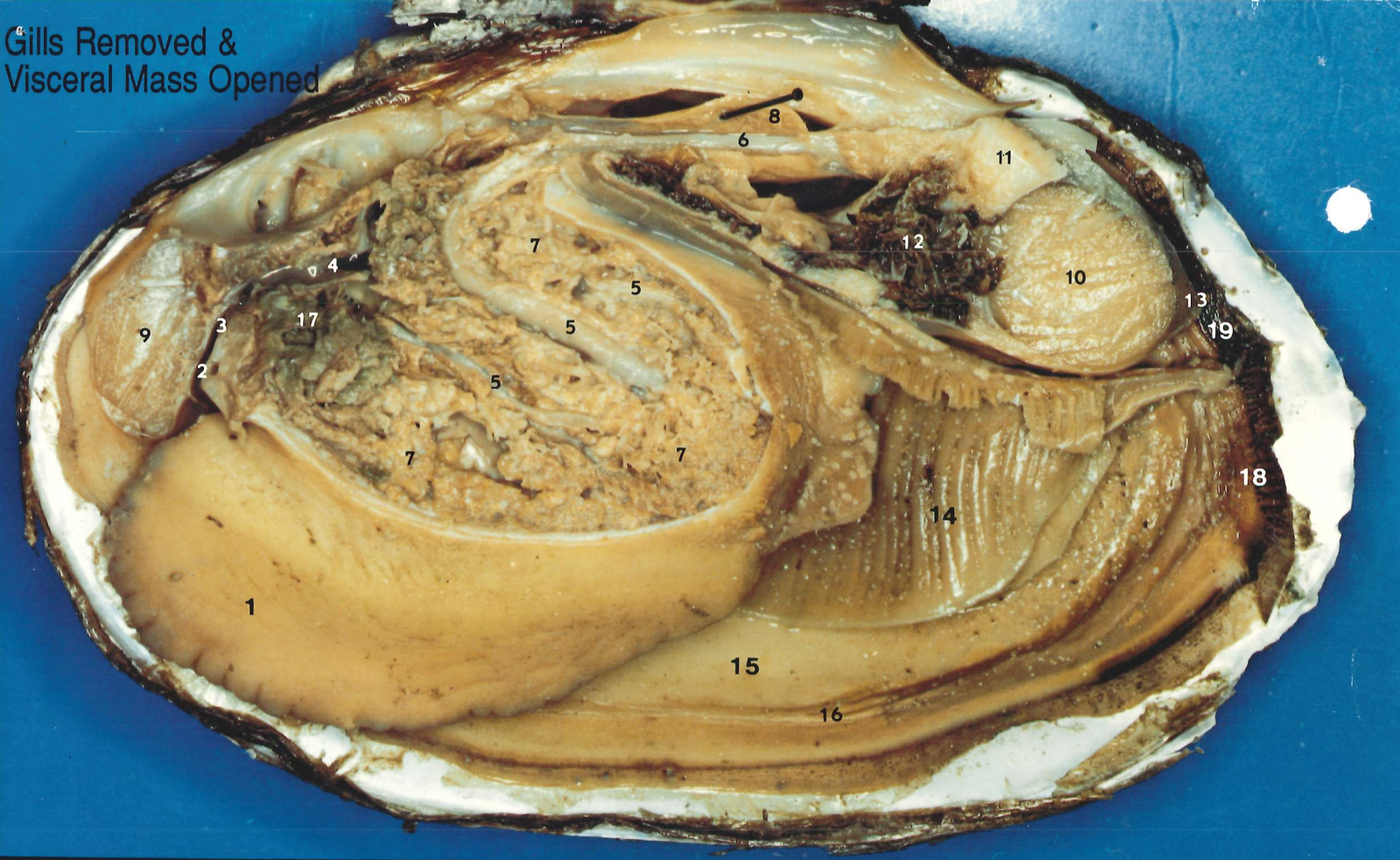
1. gills
2. anterior adductor muscle
3. anterior foot retractor
4. pericardium
5. posterior adductor muscle
6. posterior foot retractor
7. foot
8. excurrent siphon
9. incurrent siphon
10. pallial muscle
11. labial palps
12. mouth
13. mantle
14. kidney
15. auricle
16. ventricle
17. aorta
18. visceral mass

Close-up of palps
& mouth



Glochidia - mag. 60 X
(found in ♀ gills)

Gills Removed &
Visceral Mass Opened



- 1. foot
- 2. mouth
- 3. esophagus
- 4. stomach
- 5. intestine
- 6. rectum
- 7. gonads
- 8. ventricle of heart
- 9. anterior adductor muscle
- 10. posterior adductor muscle
- 11. posterior foot retractor
- 12. kidney
- 13. anus
- 14. gill
- 15. mantle
- 16. pallial muscle
- 17. digestive gland
- 18. incurrent siphon
- 19. excurrent siphon
- 20. umbo
- 21. growth line
- 22. pallial line
- 23. cardinal tooth

BioCam Communications Inc.

Box 417 PBC
Kelowna, B.C.
Canada V1Y 7N8

PMB 12, 250 H St.
Blaine, WA 98230
U.S.A.
copyright © 1990 Gordon Peachey
www.biocam.com

