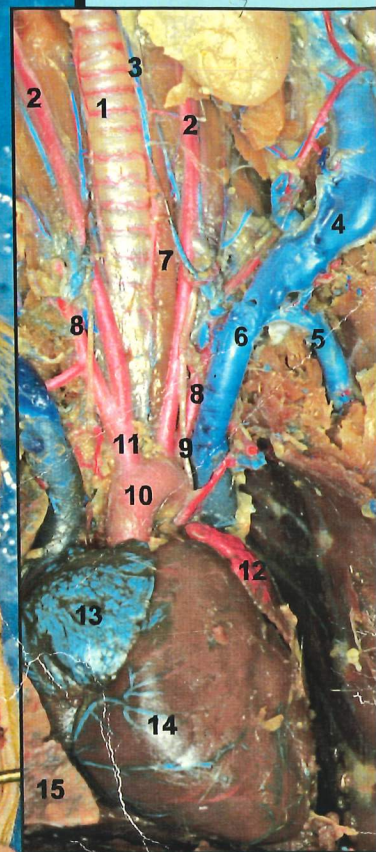


1. trachea
2. common carotid a.
3. internal jugular v.
4. external jugular v.
5. subclavian v.
6. cranial vena cava
7. esophagus
8. subclavian a.
9. vagus nerve
10. aortic arch
11. innominate a.
12. left atrium
13. right atrium
14. ventricles of heart
15. right lung



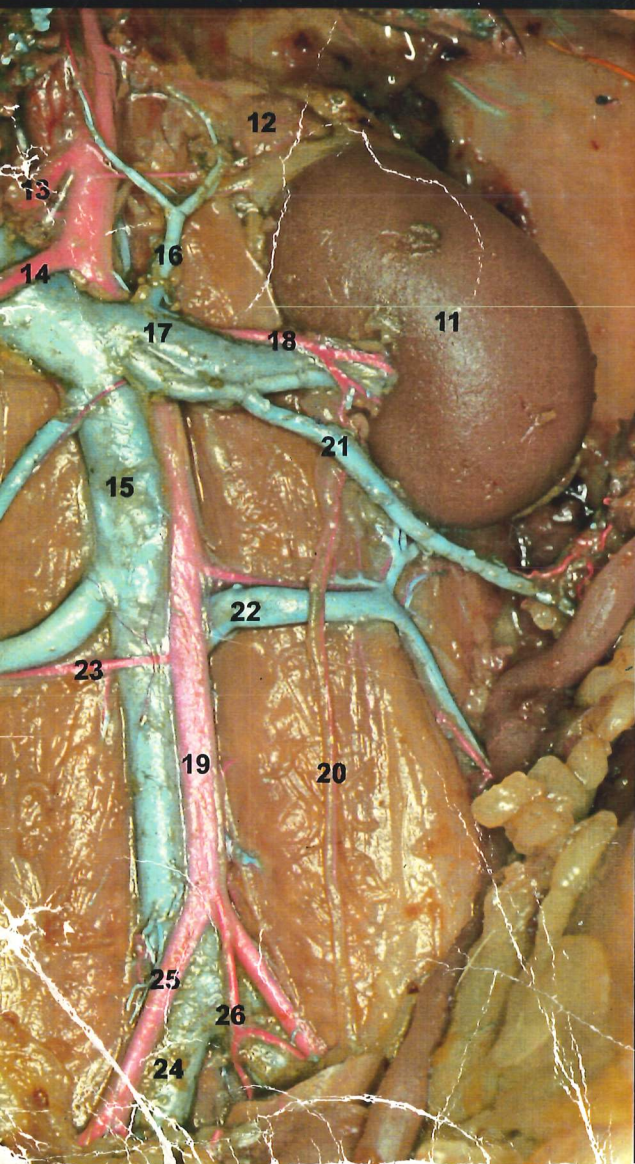
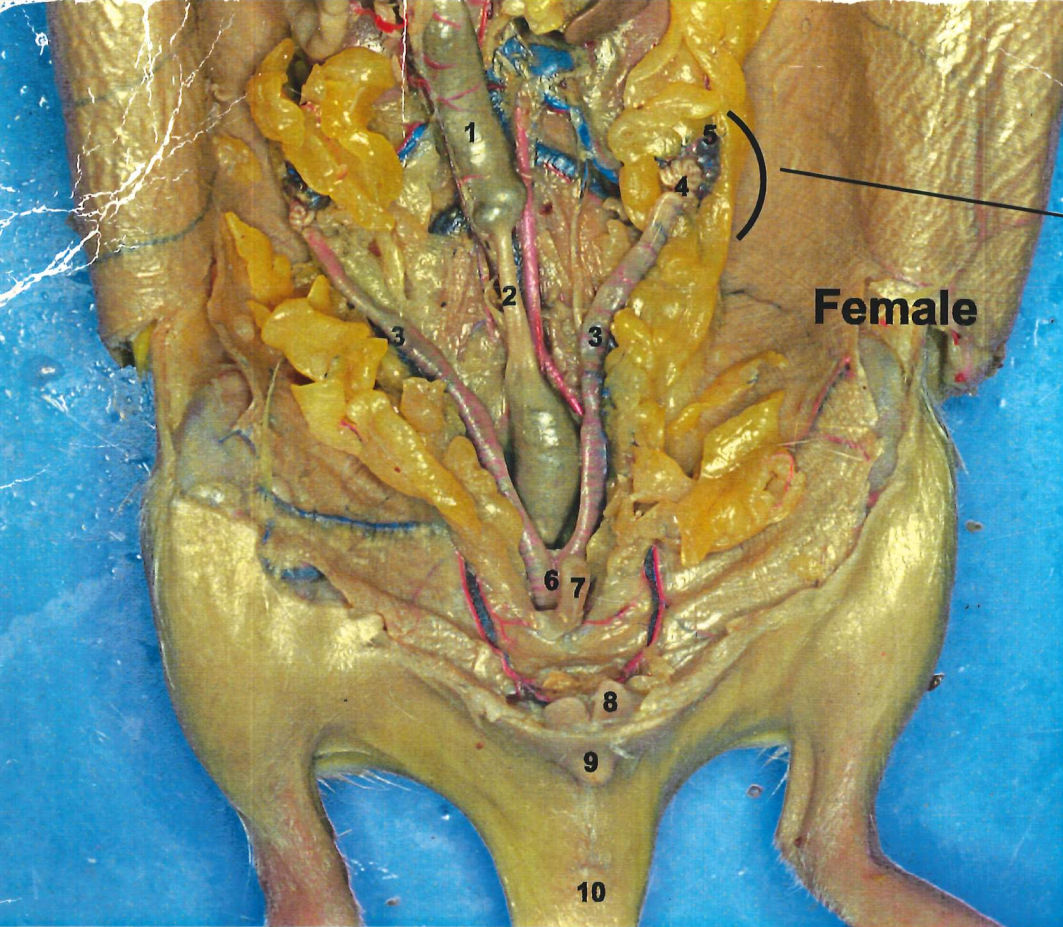
16. lymph node
17. parotid g.
18. sublingual g.
19. submandibular g.
20. thyroid
21. thymus
22. diaphragm
23. xiphoid process
24. spleen
25. liver
26. stomach
27. small intestine
28. pancreas
29. caecum
30. appendix
31. colon
32. kidney
33. ureter
34. aorta
35. vena cava
36. vesicular g.
37. coagulating g.
38. bladder
39. prostate g.
40. penis
41. preputial g.
42. scrotum
43. testis
44. epididymis
45. vas deferens
46. spermatic v.

Male

THE CONCISE

RAT





1. fecal pellet in colon
2. colon
3. uterus
4. oviduct
5. ovary
6. vagina
7. bladder
8. preputial gland
9. clitoris
10. anus
11. kidney
12. adrenal g.

13. celiac a.
14. cranial mesenteric a.
15. caudal vena cava
16. suprarenal v.
17. renal v.
18. renal a.
19. aorta
20. ureter
21. ovarian v.
22. iliolumbar v.
23. iliolumbar a.
24. common iliac v.

25. common iliac a.
26. caudal mesenteric a.
27. stomach
28. esophagus
29. pylorus
30. duodenum
31. pancreas
32. adipose tissue
33. bile duct
34. liver (cut away)
35. spleen

**BioCam**  
Communications Inc.  
[www.biocam.com](http://www.biocam.com)

PMB 12, 250 H St.  
Blaine, WA 98230 USA  
Box 2373 RPO Banks Ctr.  
Kelowna, BC V1X 6A5

Copyright © 1989  
by Gordon Peachey  
Printed in Canada

