



Male

The Concise Grasshopper

- | | | |
|-----------------|----------------|--------------------|
| 1. head | 10. abdomen | 19. labium |
| 2. compound eye | 11. spiracle | 20. labial palp |
| 3. antenna | 12. coxa | 21. maxilla |
| 4. prothorax | 13. trochanter | 22. maxillary palp |
| 5. mesothorax | 14. femur | 23. mandible |
| 6. metathorax | 15. tibia | 24. hypopharynx |
| 7. fore wing | 16. tarsus | 25. ocellus |
| 8. hind wing | 17. clypeus | 26. ovipositor |
| 9. tympanum | 18. labrum | |

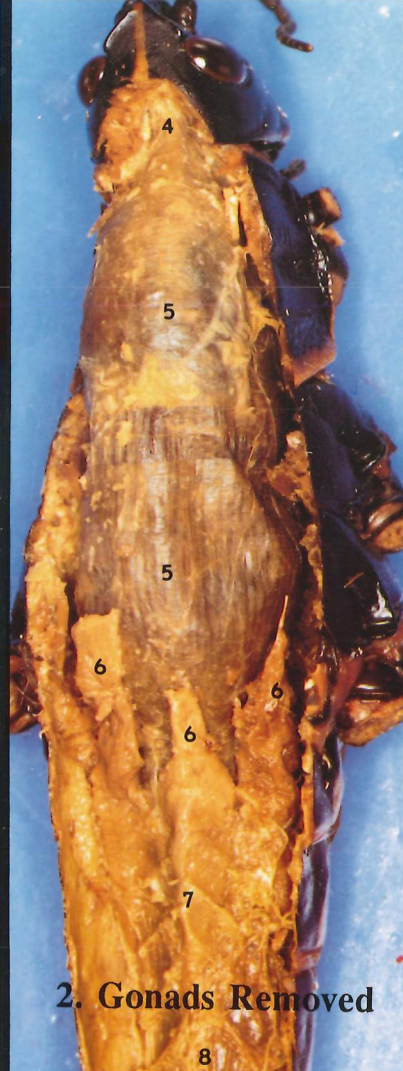


Mouth Parts



Female





1. eggs in ovary
2. ovipositor
3. testis
4. esophagus
5. crop
6. gastric caeca
7. stomach
8. intestine
9. malpighian tubules
10. tracheal tube
11. internal opening to spiracle
12. ganglion
13. nerve cord
14. tarsus
15. claw

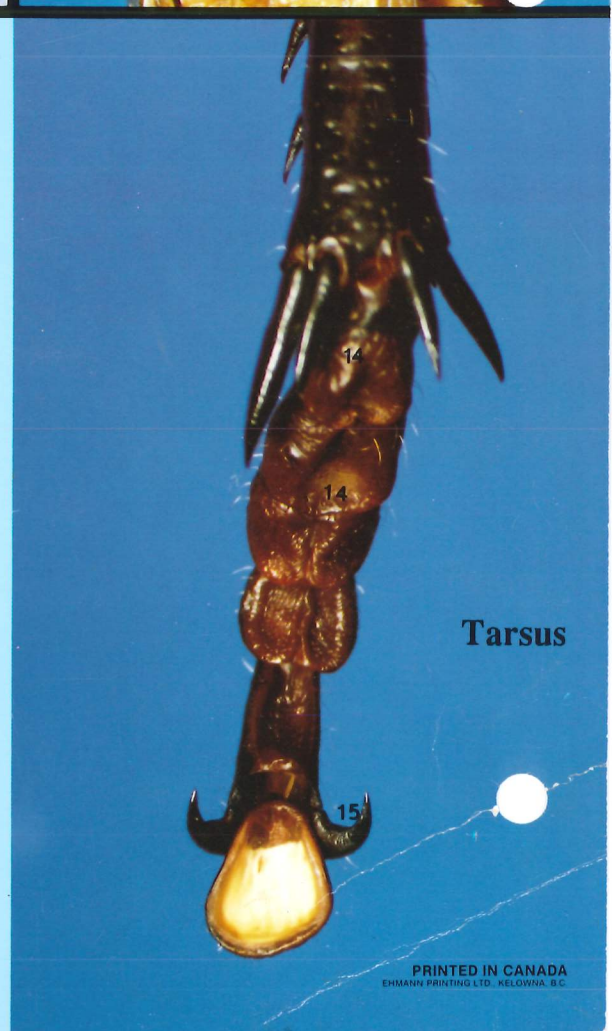
copyright © 1989 by Gordon Peachey

BioCam Communications Inc.

Box 417 PBC
Kelowna, B.C.
Canada V1Y 7N8

PMB 12, 250 H St.
Blaine, WA 98230
U.S.A.

www.biocam.com



PRINTED IN CANADA
EHMANN PRINTING LTD., KELOWNA, B.C.